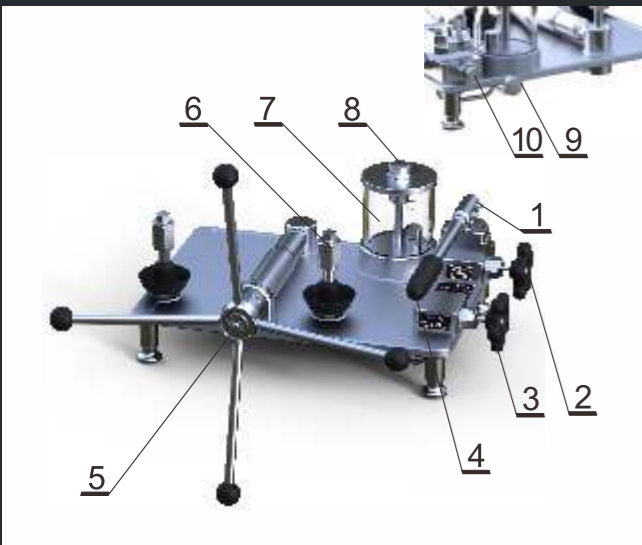
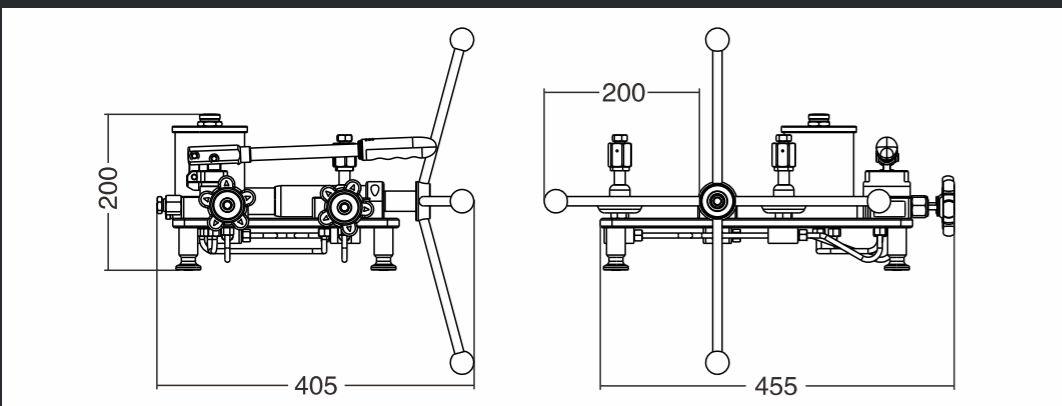
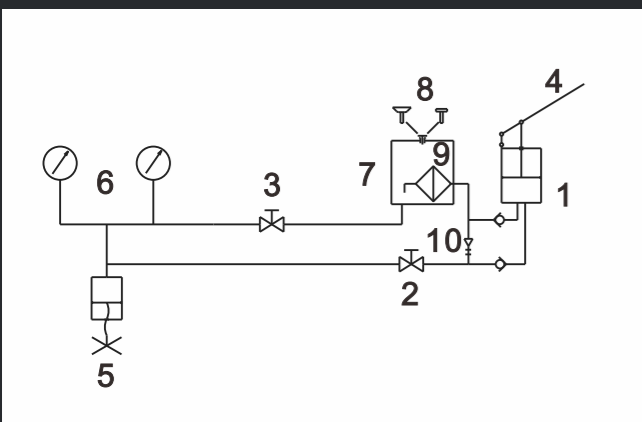


## Views and Hydraulic Schematic



- 1 – Pre-pressure pump
- 2 – Isolation valve
- 3 – Vent valve
- 4 – Pre-pressure pump handle
- 5 – High-pressure and fine adjustment handle
- 6 – Quick connector
- 7 – Reservoir
- 8 – Reservoir cover vent valve
- 9 – Liquid drain valve
- 10 – Safety valve (do not open)



## Warnings and cautions

- > Operate the pump in the rated pressure range of 60,000 psi (4,200 bar) and do not exceed the safety pressure of 65,000 psi (4,500 bar).
- > Close all valves and handles and tighten the ports when transporting the pump.
- > Always keep the reservoir cover vent valve (#8) open during operation.
- > Change media immediately if it is contaminated.
- > Keep media level between 1/4 and 3/4 of the liquid reservoir filled.
- > Keep the connection threads clean and remove any particles or dirt on the threads.
- > Do not over tighten the valves, connectors and handles to avoid damage.
- > Do not use the pre-pressure pump to generate more than 8,700 psi (600 bar)
- > Additel corporation is not liable for any safety problems or damages caused by misuse or incorrect operation.

## Specification

- > **Pressure range:** 0 to 60,000 psi ( 4,200 bar ) positive pressure
  - > **Temperature:** ( 0 ~ 50 ) °C      **Storage temperature:** ( -25 ~ 70 ) °C
  - > **Humidity range:** < 95%
  - > **Adjustment resolution:** 0.015 psi ( 1 mbar )
  - > **Safety pressure:** < 65,000 psi (4,500 bar)
  - > **Pressure media:** Diethylhexyl Sebacate
  - > **Reservoir capacity:** 420 ml (25.6 in<sup>3</sup>)
  - > **Size:** Height: 7.9" ( 200 mm )      Base: 17.9" ( 455 mm ) x 15.9" ( 405 mm )
  - > **Weight:** 33.1 lb ( 15 kg ) without media
  - > **Material:** SS, aluminum, copper, Buna-N
- Remark: Please drain the liquid in transportation.*

## Troubleshooting

| Problem  | Cause  | Solution   |
|--|--|--|
| Can not to generate pressure with the pre-pressure pump lever (#5) | Vent valve(#3) is open   | Close Vent valve(#3)                             |
|  | O-ring is broken   | Replace O-ring                                   |
|  | Not enough media is in the reservoir.                            | Fill more media                                  |
| Hard to generate pressure with the pre-pressure pump lever (#5)    | Isolation valve(#2) is closed                                    | Open the isolation valve(#2)                     |
|  | Lever raised too high when above 2,900 psi                       | Lift the lever in small angel                    |
|  | Pre-pressure pump max pressure of 8,700 psi (600 bar) is reached | Use High-pressure and fine adjustment handle(#5) |
| Hard to turn the Valves or handles                                 | Too much power used in last operation                            | Close vent valve smoothly                        |
|  | Hard to close isolation valve in high pressure                   | Use more force                                   |
|  | Hard to turn the High-pressure Handle(#5)                        | Use more force                                   |
|  | Not enough lubrication on screw thread                           | Apply more lubrication                           |



**Additel 960**

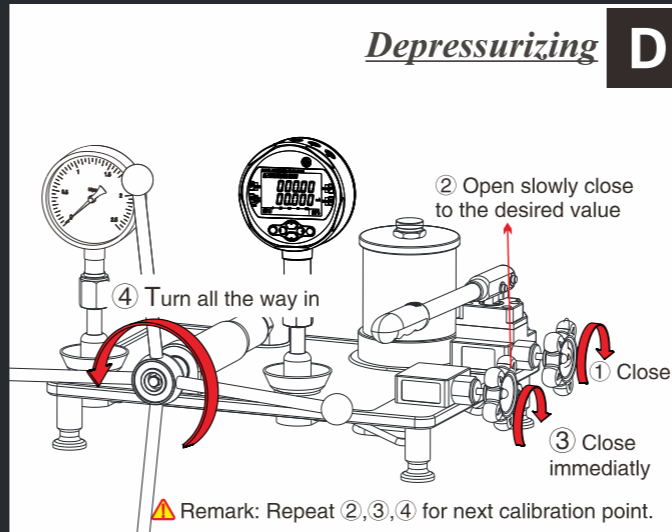
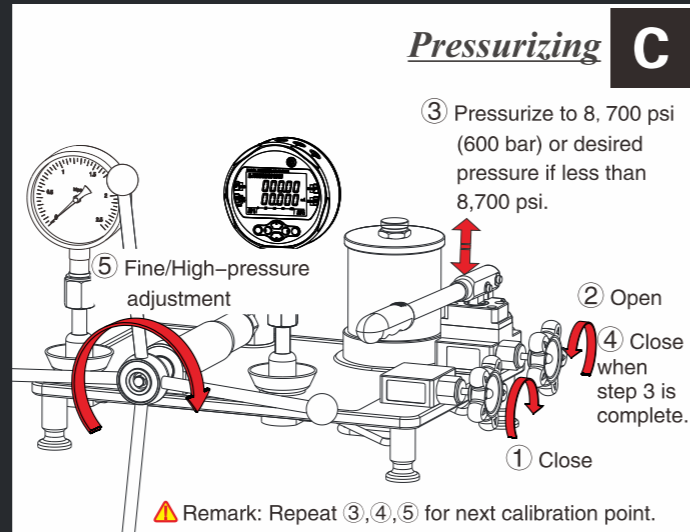
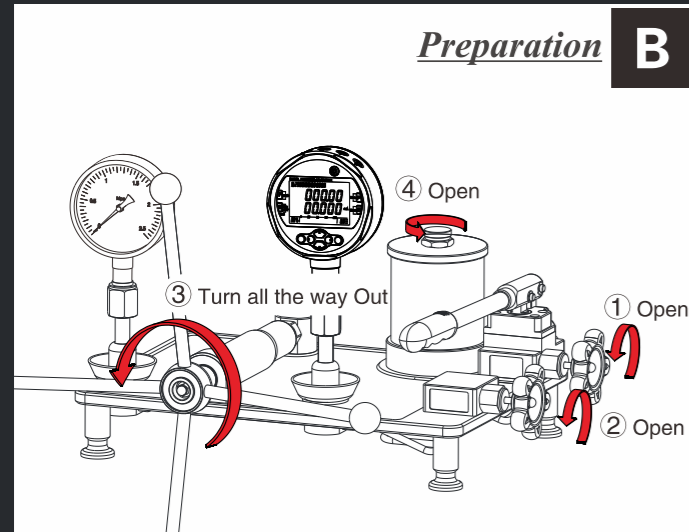
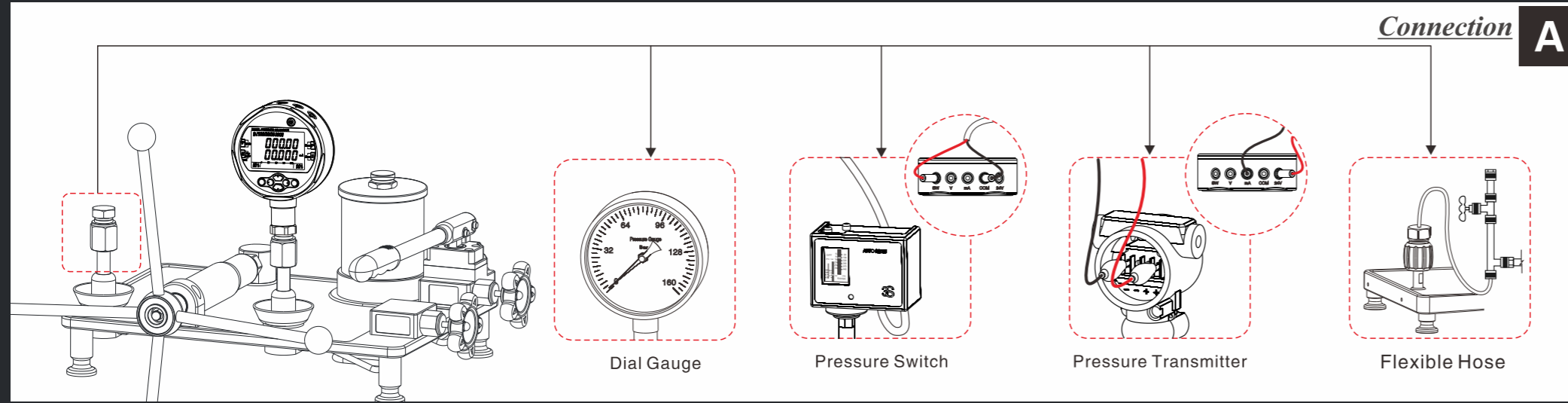
Hydraulic Ultra-High Pressure Test Pump User's Manual

[Version number:1806V01]

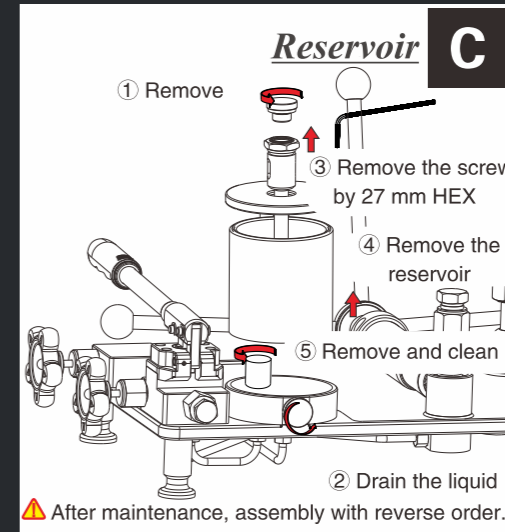
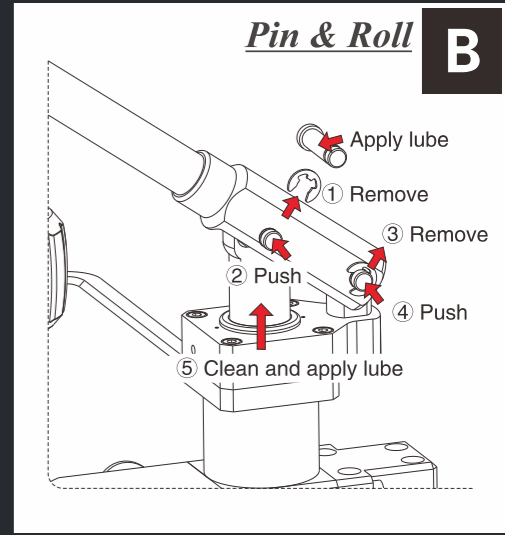
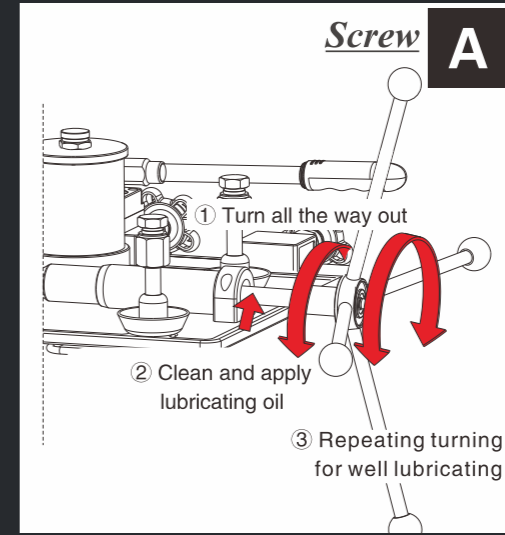
Please download the latest version from [www.additel.com](http://www.additel.com)



# Basic Operation



# Maintenance



**Remark:**  
 A: Additel has made a concerted effort to provide complete and current information for the proper use of the equipment. The product specifications and other information contained this manual are subject to change without notice.  
 B: Above pictures are just for reference.