

# VEICHI

## DRIVE FOR EVER



# VEICHI

Suzhou Veichi Electric Co., Ltd

No.1000 Songjia Road, Guoxiang street, Wuzhong Economic and Technological Development Zone,

Tel: +86-512-6617 1988 Fax: +86-512-6617 3610

Facebook: <https://www.facebook.com/veichigroup>

WhatsApp: +86-138 2881 8903

<https://www.veichi.com>



Official Website

Version: Oct. 2024

Any contents in this book are subject to change without notice. Veichi Electric Co., Ltd all rights reserved, reproduction in all its forms is strictly prohibited.

[www.veichi.com](http://www.veichi.com)



VEICHI electric phase III digital production base



VEICHI electric phase I and II production and research base

VEICHI Electric (stock code: 688698) is a high-tech company focused on electrical drive and industrial control, offering a full range of industrial automation products. With facilities in Suzhou, Shenzhen, Xi'an, and a subsidiary in India, VEICHI serves customers worldwide with reliable and competitive offerings.

The company boasts an extensive portfolio of products, encompassing AC drives, servo systems, and control systems, which are widely utilized across various sectors such as heavy industry, light industry, and high-end equipment, providing scenario-based solutions that support the digital and intelligent transformation of the manufacturing industry. Moreover, the company is in lockstep with the zeitgeist, expanding its reach into burgeoning fields like robotics, renewable energy, and healthcare with a suite of innovative products, including hollow cup motors, frameless motors, hybrid inverters, and surgical power systems. These cutting-edge offerings significantly enhance the prosperity and advancement of the industries they serve.

On long-term and persistent independent R&D and innovation, VEICHI has successfully cultivated a series of patented technologies with independent intellectual property rights, and has mastered the core technologies of motor control such as vector control of PMSM, high-frequency pulse injection control, field-weakening control for higher speed, scalar V/F control and vector control etc, and of silicon carbide application, motor parameter tuning and identification, motor control and protection, and motor speed tracking and start-up control. As of June 30, 2024, a total of 221 patents have been granted, including 51 patents for inventions.

VEICHI has been developing step by step over the past 19 years with abundant honorary awards and certificates from the state and competent authorities, including "the Third Batch of Special and Sophisticated 'Small Giant' Enterprises That Produce Novel and Unique Products" "High-tech Enterprises", "Jiangsu Provincial Engineering Technology Research Center", "Jiangsu Provincial Enterprise Technology Center", "Jiangsu Provincial Industrial Internet Development Demonstration Enterprise (Benchmarking Factory Category)" and others.

In the future, VEICHI Electric will continue to uphold the business philosophy of "guided by market demand and driven by technological innovation", strengthen the key core technology research and product iteration, and constantly expand its high-performance, high-quality, high-reliability applications, contributing to the development of electrical drive and industrial control with might and main.



Suzhou R&D Center



Shenzhen R&D Center



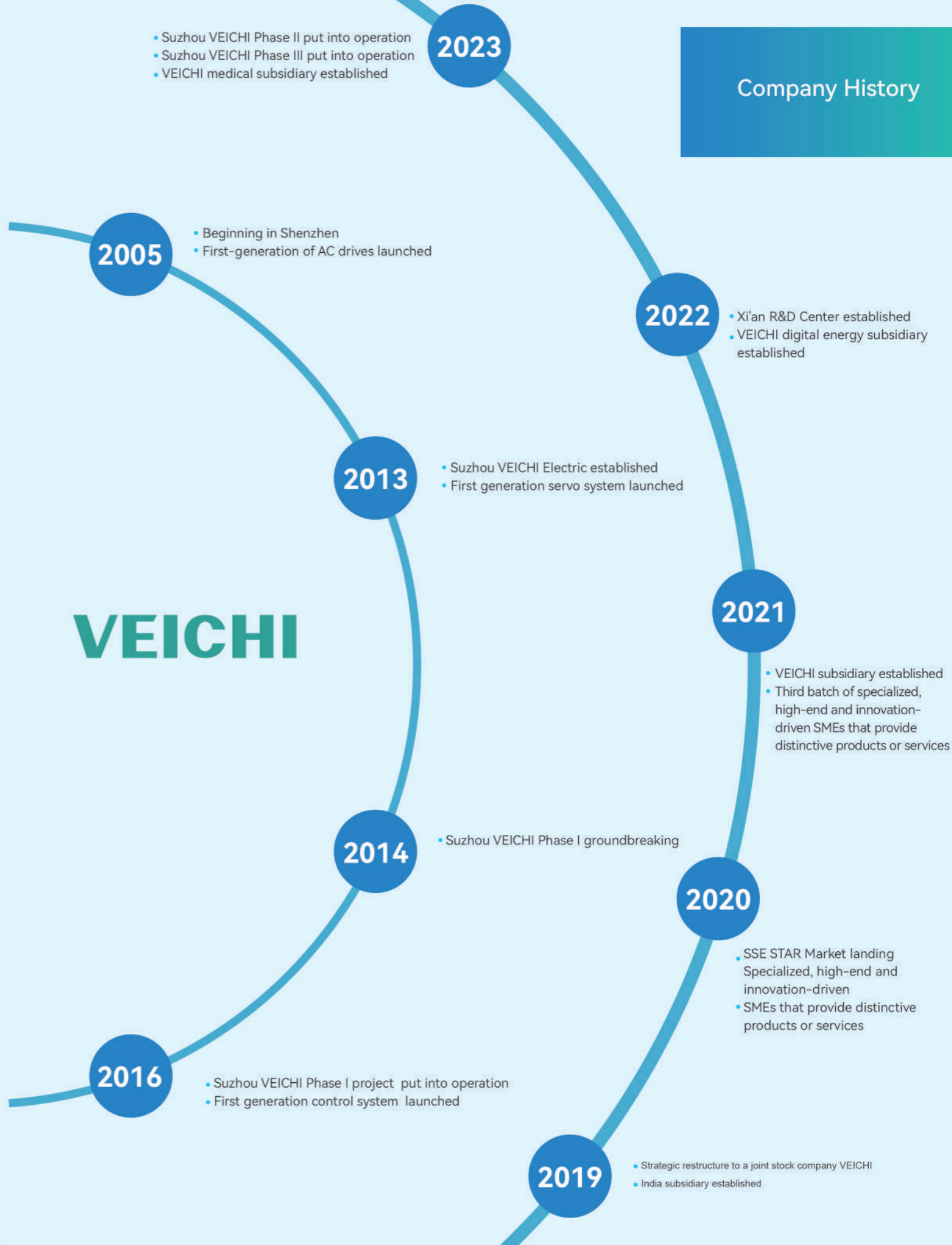
Xi'an R&D Center

# Company Honors



# Company History

# VEICHI



## The Robot Industry Experts

VEICHI gathers wisdom from three parties, actively leveraging their core technological advantages in the research and development and manufacturing of key components. With "robot joint modules" as their main business, we integrate resources from three parties to closely grasp customer needs, and develop more competitive robot joint module products to quickly capture market share and inject new momentum into the development of the robotics industry.

### Talent

Outstanding professional technical talents in the domestic industrial control field gather here. Currently, R&D personnel account for 37.16% of the total number of employees, and technical personnel with undergraduate degrees and above account for 74.62%.

### R&D Philosophy

Abide by the R&D philosophy of "technological innovation for higher excellence", and customer needs, VEICHI serves with better products and technologies.

### R&D Achievements

As of June 30, 2024, a total of 221 patents, including 51 invention patents, mainly in the fields of electrical drive, industrial control, green energy, and industrial automation equipment are granted.

### Partners

In-depth cooperative relationships with many famous domestic colleges and research institutions are set up, e.g. "Jiangsu Province Postdoctoral Innovation Practice Base" and "Jiangsu Province Graduate Student Workstation," continuously launching specialized product series with distinctive features.

### R&D Investment

Veichi invests 10% of its operating income in R&D annually. It has established a 3-meter anechoic chamber, climate environment lab, temperature and vibration lab, full power range electric drive performance lab, and several industrial application platforms to enhance product performance, quality and reliability.

### R&D Pattern

EDA (Electronic Design Automation), which includes theoretical design, followed by simulation verification (thermal simulation, circuit simulation, code simulation), and then prototype testing, and IPD (Integrated Product Development), which features efficiency and collaboration are adopted.

### 1. Scara Robots

VCG030-500	05	VCG100-700	06
VCH030-Optional Length	07	VCH100-Optional Length	08
VCH200-1000	09	VCH500-1200	10
VCW030-Optional Length	11	VCW060-Optional Length	12

### 2. Collaborative Robots

VC-TCR030	13	VC-TCR050	14	VC-TCR100	15
VC-TCR200	16	VC-TCR300	17		

### 3. Vertical Polyarticulated Robots

#### ■ Welding Robots

VC-TKB1400	24	VC-TKB1440	25
VC-TKB2030	26		

#### ■ General Robots 6-axis

VC-TKB1010	18	VC-TRB050	19	VC-TKB060	20
VC-TKB070	21	VC-TKB1210	22	VC-TKB1100	23
VC-TKB1600	27	VC-TKB2670	28	VC-TKB2690	28
VC-TKB3670	29	VC-TKB3690	30	VC-TKB5600	31
VC-TKB5700	31	VC-TKB5800	32	VC-RRB6700	33
VC-RRB6600	34				

#### ■ General Robots 4-axis

VC-TKB460	35	VC-TKB4600	36	VC-TKB660	37
-----------	----	------------	----	-----------	----

### 4. Accessory





VC-TRP04 Pendant	38	VC-TRC4-A03 Controller	39
VC-TRC5-B06 Controller	40	VC-TRC5-G06 Controller	41
VC-TRC3-C06 Controller	42	VC-TRC3-D06 Controller	43

### 5. Application Scenario






### 6. Partner

## Quick Selection Table

Product				
Model	VCG030-500	VCG100-700	VCH030-Optional Length	VCH100-Optional Length
Payload	3kg	10kg	3kg	10kg
Beam Length	500mm	700mm	400/500/600mm	800/900/1000mm
Protection Level	IP40	IP40	IP40	IP40
Moment of Inertia	0.05kg*m <sup>2</sup>	0.3kg*m <sup>2</sup>	0.05kg*m <sup>2</sup>	0.3kg*m <sup>2</sup>
Position Repeat Accuracy	J1/J2	±0.01mm	±0.02mm	±0.01mm
	J3	±0.01mm	±0.01mm	±0.01mm
	J4	±0.01°	±0.01°	±0.01°


Product				
Model	VCH200-1000	VCH500-1200	VCW030-Optional Length	VCW060-Optional Length
Payload	20kg	50kg	3kg	6kg
Beam Length	1200mm	1200mm	500/600mm	500/600/700mm
Protection Level	IP40	IP40	IP40	IP40
Moment of Inertia	2.45kg*m <sup>2</sup>	4.35kg*m <sup>2</sup>	0.05kg*m <sup>2</sup>	0.05kg*m <sup>2</sup>
Position Repeat Accuracy	J1/J2	±0.05mm	±0.05mm	±0.01mm
	J3	±0.02mm	±0.02mm	±0.01mm
	J4	±0.005°	±0.005°	±0.01°

## Quick Selection Table

Product					
Model	VC-TCR030	VC-TCR050	VC-TCR100	VC-TCR200	VC-TCR300
Payload	3kg	5kg	10kg	20kg	30kg
Beam Length	585mm	900mm	1310mm	1650mm	1800mm
Protection Level	IP54/IP67	IP54/IP67	IP54/IP67	IP54	IP54
Position Repeat Accuracy	±0.03mm	±0.03mm	±0.05mm	±0.1mm	±0.1mm

## Quick Selection Table

Product					
Model	VC-TKB1010	VC-TRB050	VC-TKB060	VC-TKB070	VC-TKB1210
Payload	1kg	3kg	6kg	7kg	7kg
Beam Length	370mm	616mm	720mm	910mm	960mm
Protection Level	IP54	IP54	IP54/IP67 (5.6 axis optional)	IP54/IP67	IP54/IP67 (5.6 axis optional)
Position Repeat Accuracy	±0.01mm	±0.02mm	±0.02mm	±0.02mm	±0.04mm

Product					
Model	VC-TKB1100	VC-TKB1400	VC-TKB1440	VC-TKB2030	VC-TKB1600
Payload	10kg	6kg	10kg	6kg	12kg
Beam Length	1110mm	1412mm	1455mm	2078mm	1410mm
Protection Level	IP54	IP54/IP67 (5.6 axis optional)	IP54	IP54	IP54/IP67 (5.6 axis optional)
Position Repeat Accuracy	±0.03mm	±0.05mm	±0.05mm	±0.07mm	±0.06mm

## Quick Selection Table

Product					
Model	VC-TKB2670/2690	VC-TKB3670	VC-TKB3690	VC-TKB5600/5700	VC-TKB5800
Payload	20kg	30kg	30kg	60/70kg	50kg
Beam Length	1721/1920mm	1721mm	1920mm	2119mm	2448mm
Protection Level	IP54/IP67 (5.6 axis optional)	IP54/IP67 (5.6 axis optional)	IP54/IP67 (5.6 axis optional)	IP54	IP54
Position Repeat Accuracy	±0.05mm	±0.05mm	±0.05mm	±0.08mm	±0.08mm

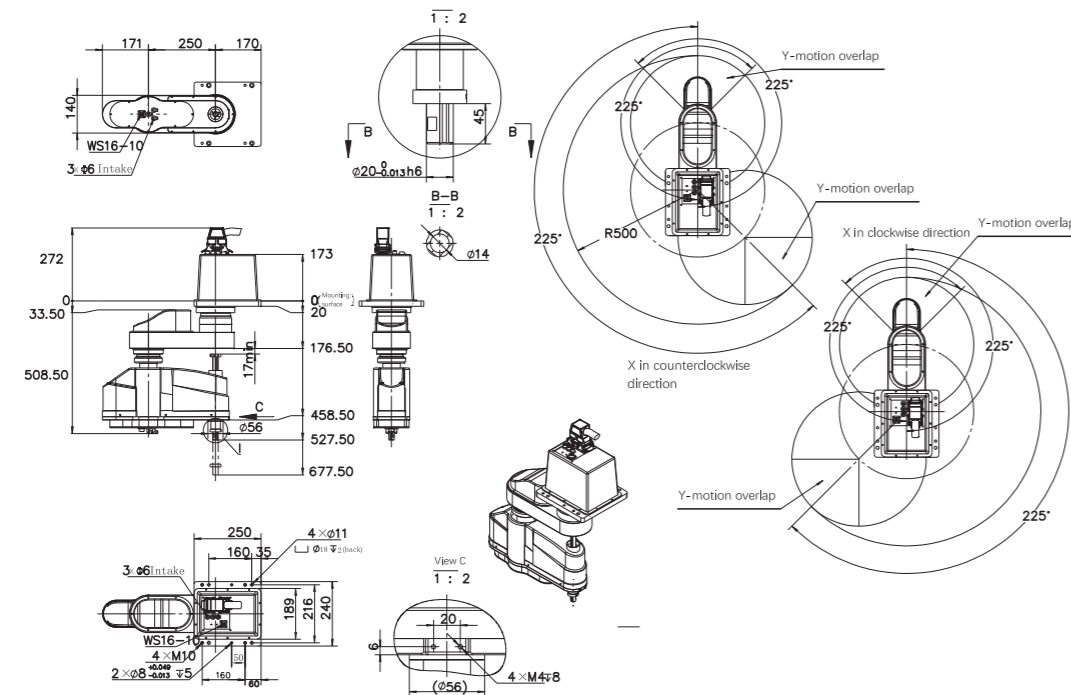
Product					
Model	VC-RRB6700	VC-RRB6600	VC-TKB460	VC-TKB4600	VC-TKB660
Payload	210kg	155kg	30kg	12kg	180kg
Beam Length	2700mm	3200mm	1840mm	1435mm	3200mm
Protection Level	IP54/IP65 (5.6 axis optional)	IP54/IP65 (5.6 axis optional)	IP54	IP54	IP54/IP65 (4 axis optional)
Position Repeat Accuracy	±0.1mm	±0.1mm	±0.08mm	±0.08mm	±0.1mm

# VCG030-500

Payload: 3kg  
Length: 500mm



		J1	J2	J3	R
Specification	Length(mm)	250	250	150	-
	Rotation Range (°)	225 -225	225 -225	-	360 -360
Reducer Mechanism	Reducer	Harmonic drive	Harmonic drive	-	-
	Conductivity	Motors-Reducer Reducers-Output	Synchronous belt pulley Direct connection	Synchronous belt pulley /	Synchronous belt pulley /
Position Repeat Accuracy(XYZ: mm)(r:°)※		±0.01		±0.01	±0.01
Max Speed (XYZ:mm/sec)(r: °/s)		9420		1000	3500
Rated Load(kg)		3kg			
Standard cycle time: 1kg Handling Time (sec)		0.32			
R-axis Moment of Lnertia (kgm2)		0.05			
I/O		0.2*10			
User Pipe (inside)		Φ6*3			
Robotics Cable Length (m)		Standard: 3 Optional: 5			
Body Weight(kg)		27kg			
Controller		VC-TRC4-A03			
Operating Temperature		0-45°C			



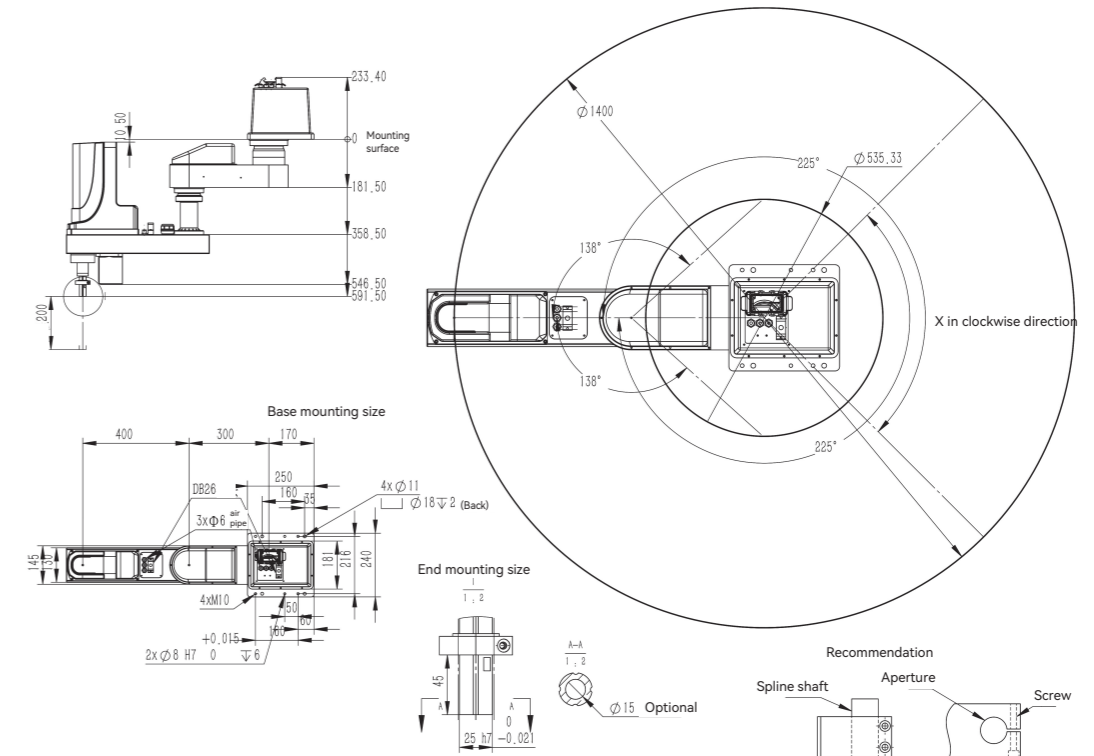
NBA0242

# VCG100-700

Payload: 10kg  
Length: 700mm



		J1 轴	J2 轴	J3 轴	R 轴
Specification	Length(mm)	300	400	200	-
	Rotation Range (°)	225 -225	138 -138	-	360 -360
Reducer Mechanism	Reducer	Harmonic drive	Harmonic drive	-	Synchronous belt pulley
	Conductivity	Motors-Reducer Reducers-Output	Synchronous belt pulley Direct connection	-	-
Position Repeat Accuracy(XYZ: mm)(r:°)※		±0.02		±0.01	±0.01
Max Speed (XYZ:mm/sec)(r: °/s)		13816		1000	720
Rated Load(kg)		10kg			
Standard Cycle Time: 1kg Handling Time (sec)		0.6			
R-axis Moment of Lnertia (kgm2)		0.3			
I/O		0.2*20			
User Pipe (inside)		Φ6*3			
Robotics Cable Length (m)		标准: 3 选配: 5			
Body Weight(kg)		43kg			
Controller		VC-TRC4-A03			
Operating Temperature		0-45°C			



## VCH030-Beam Length

Payload: 3kg  
Length: 400/500/600mm

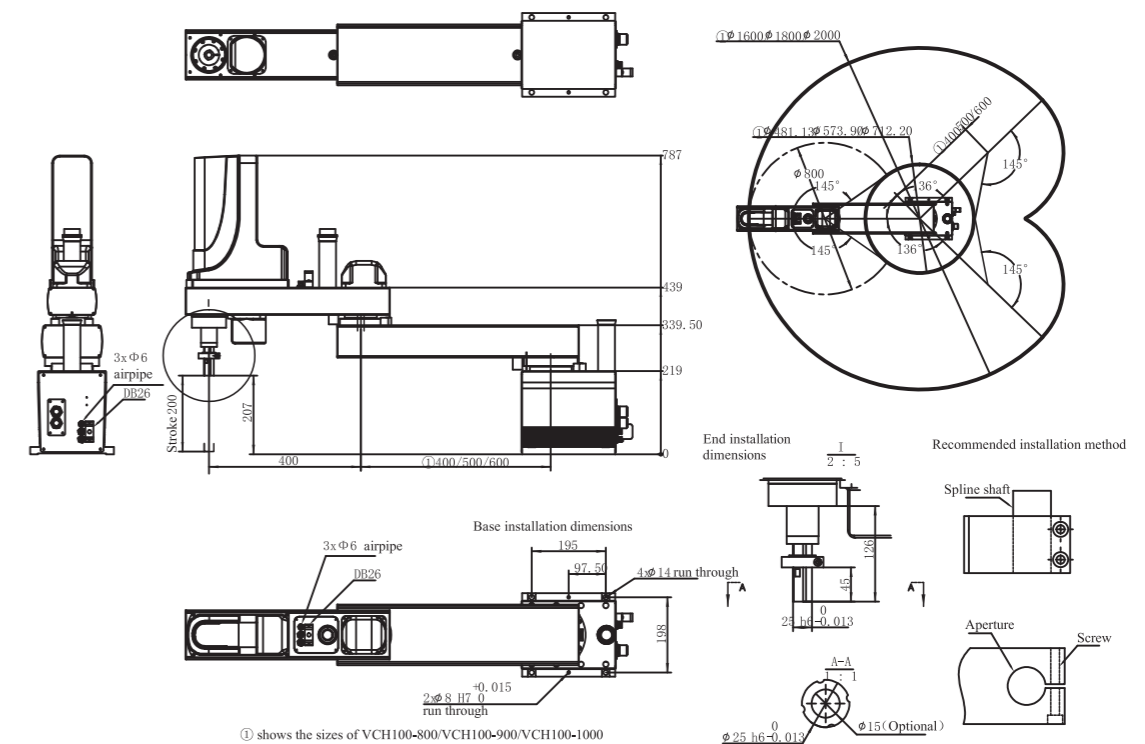
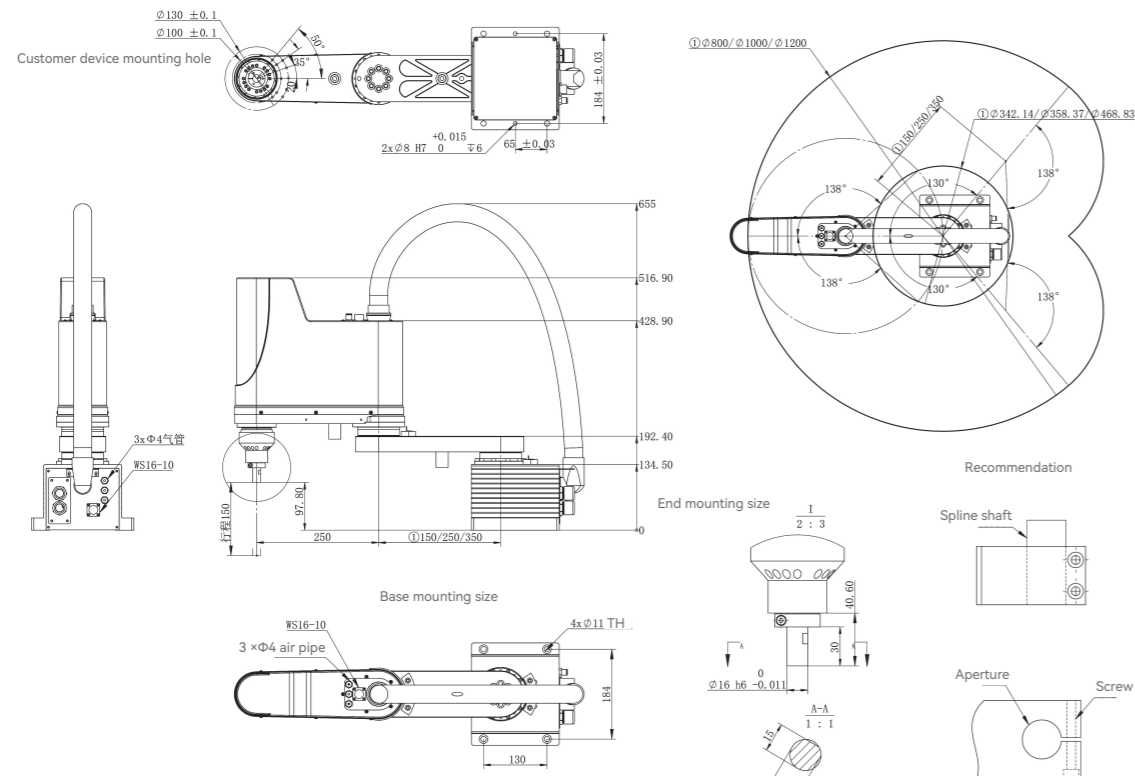


## VCH100-Beam Length

Payload: 10kg  
Length: 800/900/1000mm

Specification	Length(mm)	J1			J2	J3	R
		VCH030-400	VCH030-500	VCH030-600	250	150	-
Rotation Range (°)		130	130	130	138	-	360
		-130	-130	-130	-138	-	-360
Reducer Mechanism	Reducer	Harmonic drive			Harmonic drive	-	Harmonic drive
	Conductivity	Motors-Reducer	Direct connection		-	-	Synchronous belt pulley
		Reducers-Output		Direct connection			
Position Repeat Accuracy(XYZ: mm)(r:°)※		±0.01			±0.01	±0.01	
Max Speed (XYZ:mm/sec)(r: °/s)		6280/7065/7850			1000	720	
Rated Load(kg)					3kg		
Standard Cycle Time: 1kg Handling Time (sec)					0.4		
R-axis Moment of Inertia(kgm2)					0.05		
I/O					0.2*10		
User Pipe (inside)					Φ4*3		
Robotics Cable Length (m)					Standard: 3 Optional: 5		
Body Weight(kg)					16.8/17.9/19kg		
Controller					VC-TRC4-A03		
Operating Temperature					0-45°C		

Specification	Length(mm)	J1			J2	J3	R
		VCH100-800	VCH100-900	VCH100-1000	400	200	-
Rotation Range (°)		136	136	136	145	-	360
		-136	-136	-136	-145	-	-360
Reducer Mechanism	Reducer	Harmonic drive			Harmonic drive	-	Harmonic drive
	Conductivity	Motors-Reducer	Direct connection		-	-	Synchronous belt pulley
		Reducers-Output		Direct connection			
Position Repeat Accuracy(XYZ: mm)(r:°)※		±0.02			±0.01	±0.01	
Max Speed (XYZ:mm/sec)(r: °/s)		11304/12089/12874			1000	720	
Rated Load(kg)					10kg		
Standard Cycle Time: 1kg Handling Time (sec)					0.6		
R-axis Moment of Inertia(kgm2)					0.3		
I/O					0.2*20		
User Pipe (inside)					Φ6*3		
Robotics Cable Length (m)					Standard: 3 Optional: 5		
Body Weight(kg)		46kg	48kg	50kg			
Controller					VC-TRC4-A03		
Operating Temperature					0-45°C		





## VCW030- Beam Length

Payload: 3kg  
Length: 500/600mm



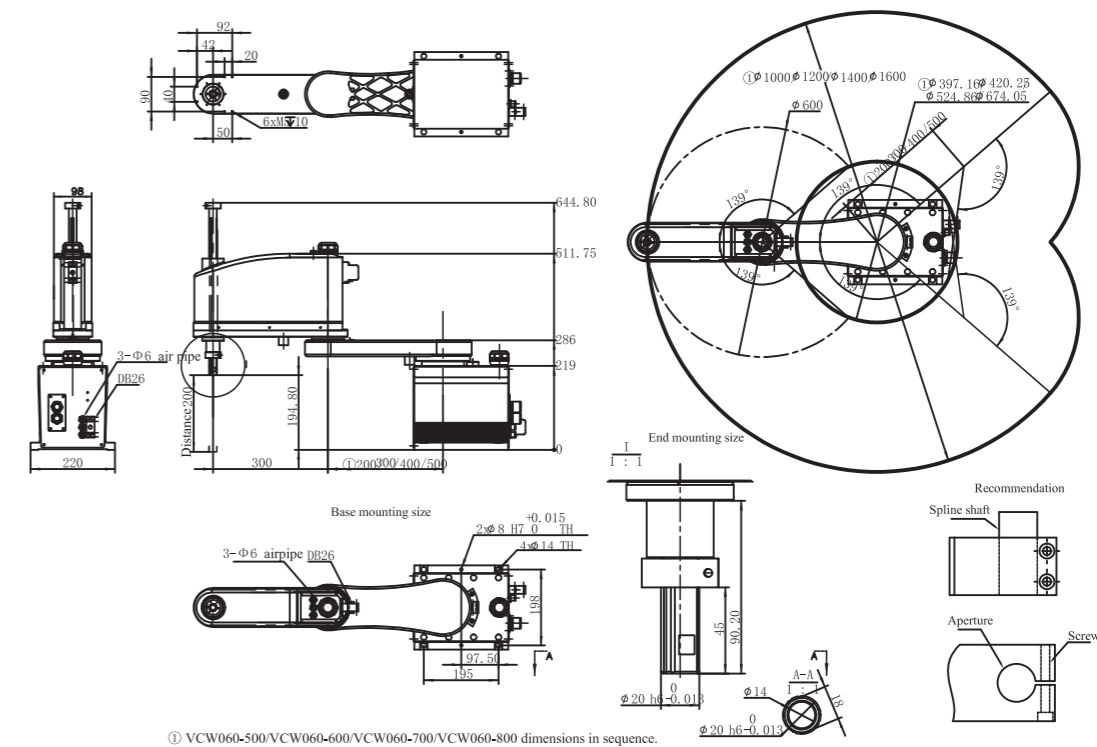
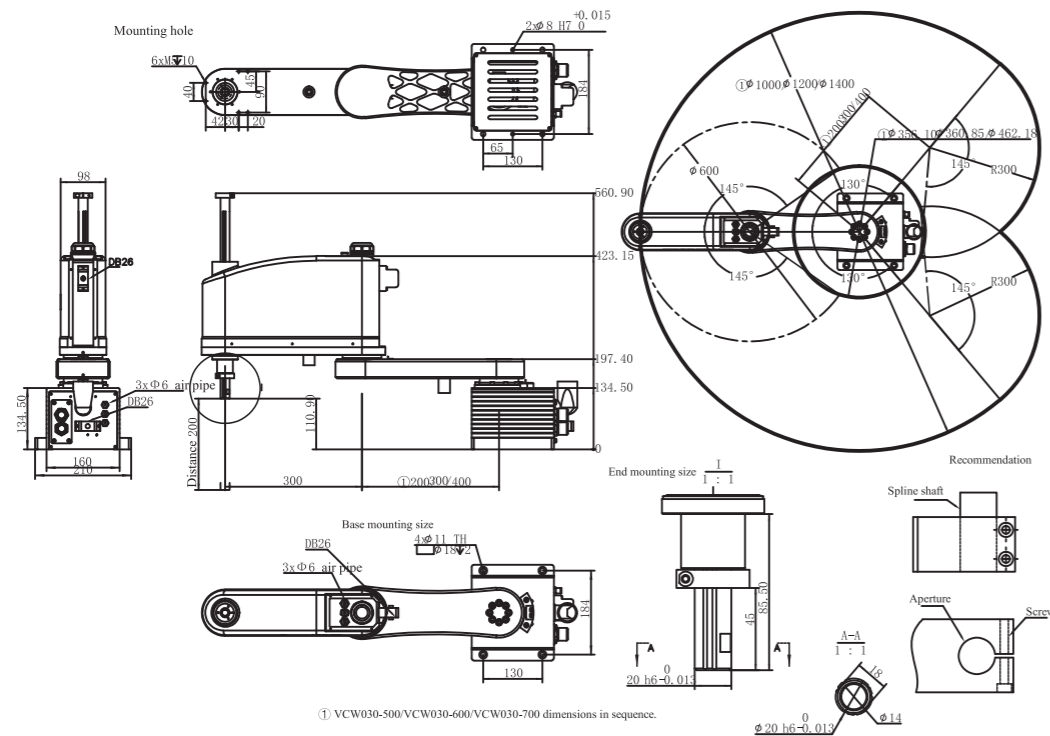
Specification	Length(mm)	J1		J2	J3	R
		VCW030-500	VCW030-600	300	200	-
Rotation Range (°)		130		145	-	360
		-130		-145		-360
Reducer		Harmonic drive		Harmonic drive	-	Harmonic drive
Mechanism	Conductivity	Motors-Reducer	Direct connection		-	Synchronous belt pulley
		Reducers-Output	Direct connection			
Position Repeat Accuracy(XYZ: mm)(r:°)※		±0.01		±0.01	±0.01	
Max Speed (XYZ:mm/sec)(r: °/s)		7693/8478		1000	3500	
Rated Load(kg)		3kg				
Standard Cycle Time: 1kg Handling Time (sec)		0.4				
R-axis Moment of Inertia(kgm2)		0.05				
I/O		0.2*10				
User Pipe (inside)		Φ6*3				
Robotics Cable Length (m)		Standard: 3 Optional: 5				
Body Weight(kg)		20/25kg				
Controller		VC-TRC4-A03				
Operating Temperature		0-45°C				

## VCW060- Beam Length

Payload: 6kg  
Length: 500/600/700mm



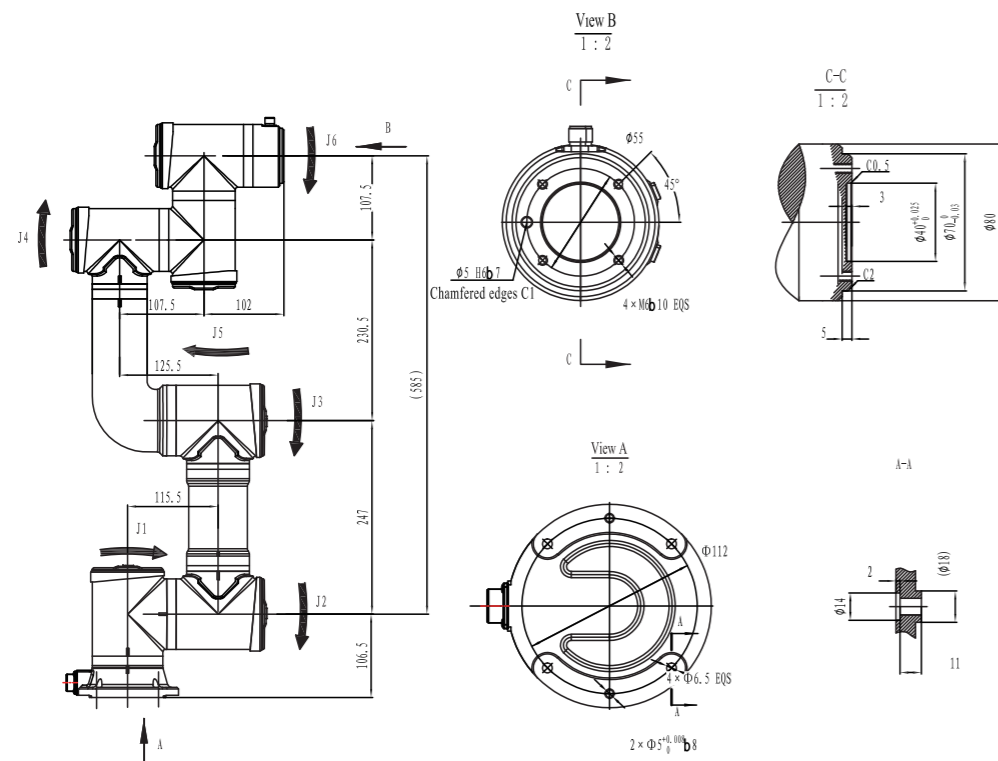
Specification	Length(mm)	J1			J2	J3	R
		VCW060-500	VCW060-600	VCW060-700	300	200	-
Rotation Range (°)		139			139	-	360
		-139			-139		-360
Reducer		Harmonic drive			Harmonic drive	-	Harmonic drive
Mechanism	Conductivity	Motors-Reducer	Direct connection		-	Synchronous belt pulley	
		Reducers-Output	Direct connection				
Position Repeat Accuracy(XYZ: mm)(r:°)※		±0.02			±0.01	±0.01	
Max Speed (XYZ:mm/sec)(r: °/s)		7693/8478/9263			1000	3500	
Rated Load(kg)		6kg					
Standard Cycle Time: 1kg Handling Time (sec)		0.4					
R-axis Moment of Inertia(kgm2)		0.05					
I/O		0.2*10					
User Pipe (inside)		Φ6*3					
Robotics Cable Length (m)		Standard: 3 Optional: 5					
Body Weight(kg)		37.5/40/42kg					
Controller		VC-TRC4-A03					
Operating Temperature		0-45°C					



# VC-TCR030

Payload: 3kg  
Length: 585mm

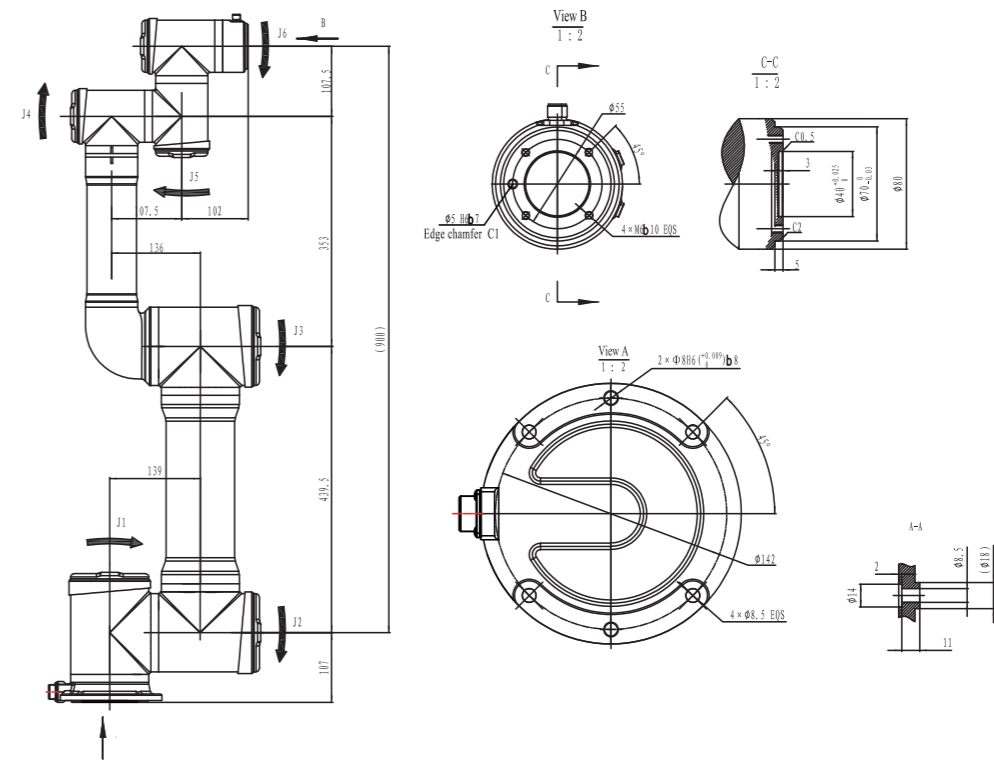
Model	VC-TCR030	
Payload	3kg	
Max Working Radius	585mm	
Body Weight	16kg	
Rated Power	0.9kw	
Max Speed	J1	180° /s
	J2	180° /s
	J3	180° /s
	J4	180° /s
	J5	180° /s
	J6	180° /s
Max Operation Area	J1	±175°
	J2	±175°
	J3	-240° ~ +60°
	J4	±175°
	J5	±175°
	J6	±360°
Protective Level	IP54/IP67	
Position Repeat Accuracy※	±0.03mm	
Working Temperature	0~45°C	
Controller	VC-TRC5-G06	



# VC-TCR050

Payload: 5kg  
Length: 900mm

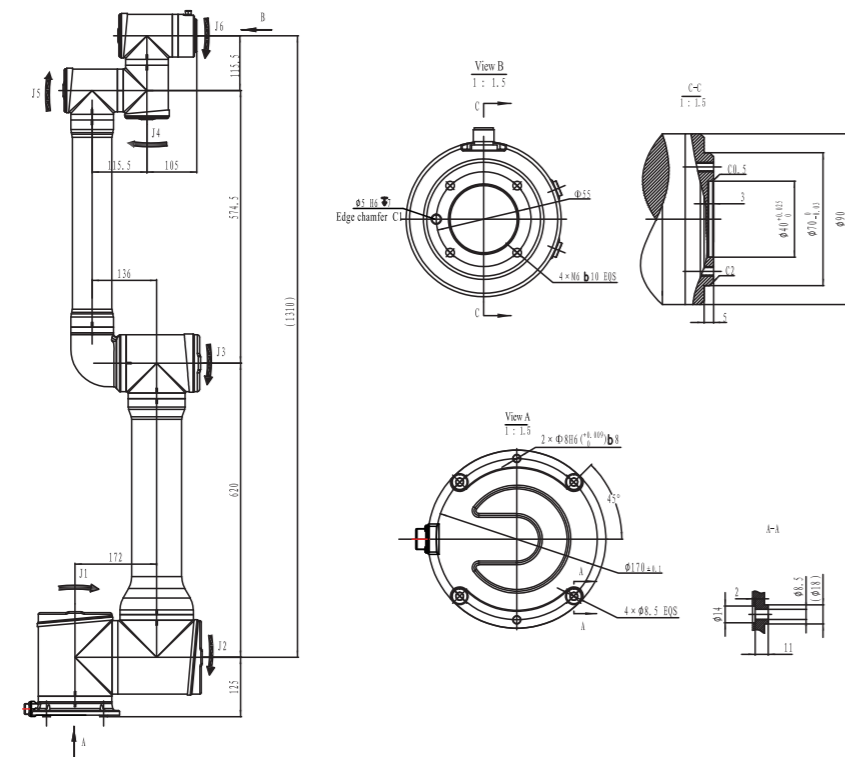
Model	VC-TCR050	
Payload	5kg	
Max Working Radius	900mm	
Body Weight	26kg	
Rated Power	2.55kw	
Max Speed	J1	180° /s
	J2	180° /s
	J3	180° /s
	J4	180° /s
	J5	180° /s
	J6	180° /s
Max Operation Area	J1	±175°
	J2	±175°
	J3	-245° ~ +65°
	J4	±175°
	J5	±175°
	J6	±360°
Protective Level	IP54/IP67	
Position Repeat Accuracy※	±0.03mm	
Working Temperature	0~45°C	
Controller	VC-TRC5-G06	



# VC-TCR100

Payload: 10kg  
Length: 1310mm

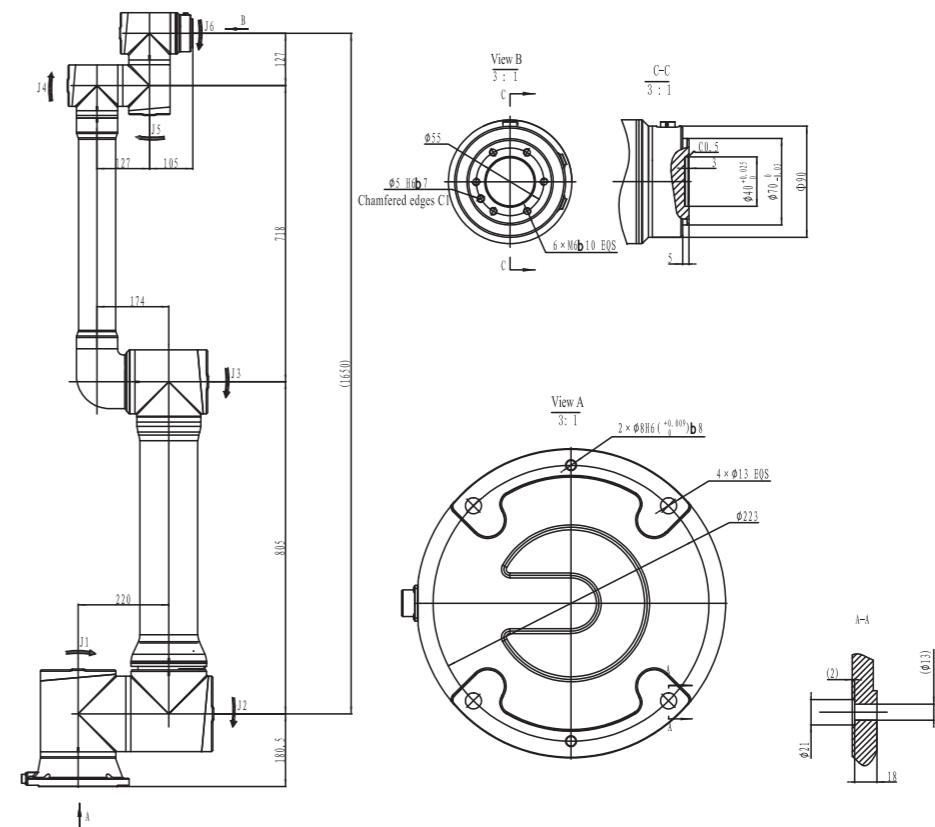
Model	VC-TCR100	
Payload	10kg	
Max Working Radius	1310mm	
Body Weight	43kg	
Rated Power	3.5kw	
Max Speed	J1	120° /s
	J2	120° /s
	J3	120° /s
	J4	180° /s
	J5	180° /s
	J6	180° /s
Max Operation Area	J1	±175°
	J2	±175°
	J3	-245° ~ +65°
	J4	±175°
	J5	±175°
	J6	±360°
Protective Level	IP54/IP67	
Position Repeat Accuracy※	±0.05mm	
Working Temperature	0~45°C	
Controller	VC-TRC5-G06	



# VC-TCR200

Payload: 20kg  
Length: 1650mm

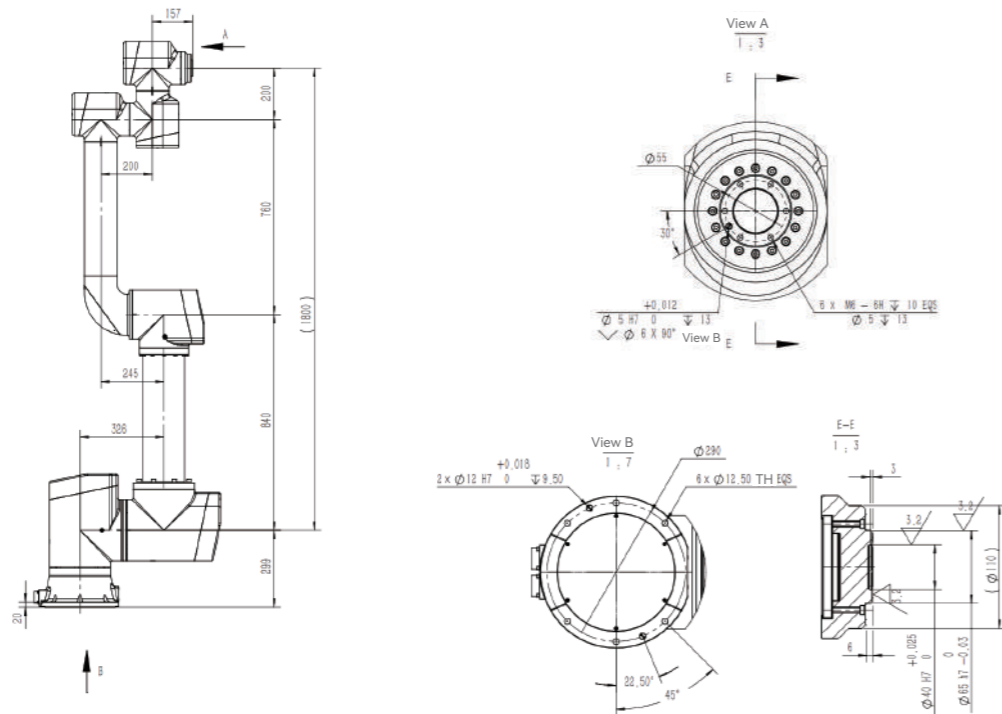
Model	VC-TCR200	
Payload	20kg	
Max Working Radius	1650mm	
Body Weight	68kg	
Rated Power	3.9kw	
Max Speed	J1	100° /s
	J2	100° /s
	J3	150° /s
	J4	180° /s
	J5	180° /s
	J6	180° /s
Max Operation Area	J1	±175°
	J2	±175°
	J3	-245° ~ +65°
	J4	±175°
	J5	±175°
	J6	±360°
Protective Level	IP54	
Position Repeat Accuracy※	±0.1mm	
Working Temperature	0~45°C	
Controller	VC-TRC5-G06	



# VC-TCR300

Payload: 30kg  
Length: 1800mm

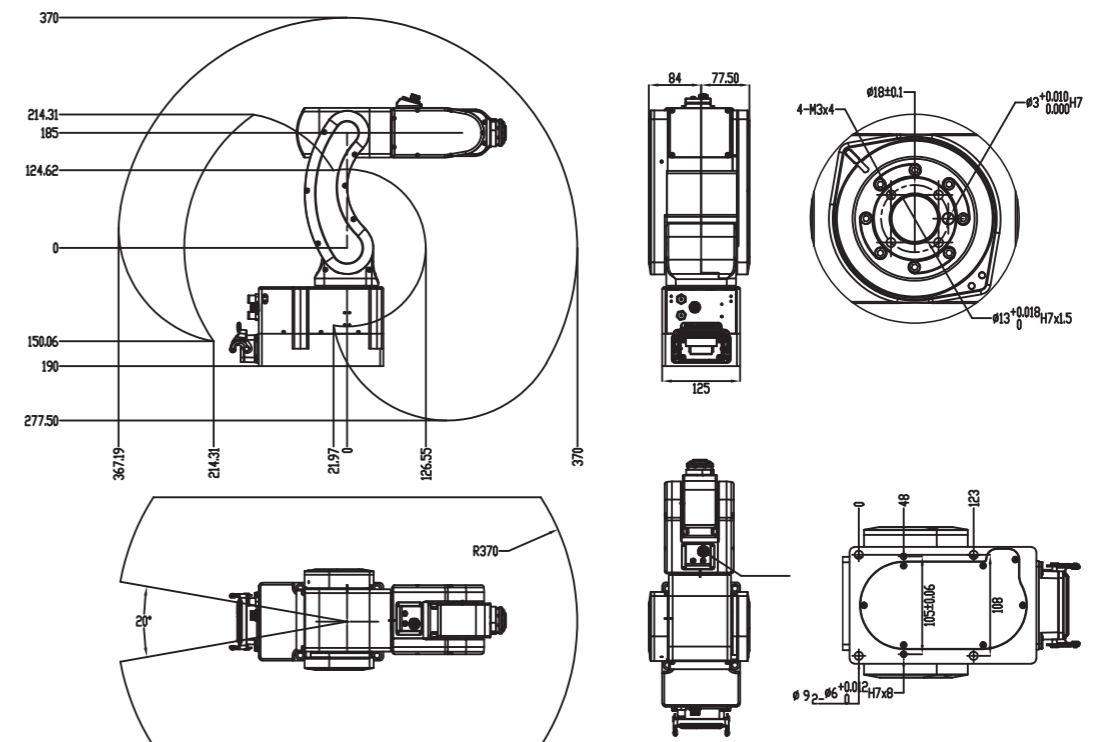
Model	VC-TCR300	
Payload	30kg	
Max Working Radius	1800mm	
Body Weight	154kg	
Rated Power	5.95kw	
Max Speed	J1	100° /s
	J2	100° /s
	J3	150° /s
	J4	180° /s
	J5	180° /s
	J6	180° /s
Max Operation Area	J1	±175°
	J2	±175°
	J3	-245° ~ +65°
	J4	±175°
	J5	±175°
	J6	±360°
Protective Level	IP54	
Position Repeat Accuracy※	±0.1mm	
Working Temperature	0~45°C	
Controller	VC-TRC5-B06	



# VC-TKB1010

Payload: 1kg  
Length: 370mm

Model	VC-TKB1010	
Payload	1kg	
Max Working Radius	370mm	
DOF	6-axis	
Body Weight	15kg	
Rated Power	0.4kw	
Max Speed	J1	320° /s
	J2	320° /s
	J3	375° /s
	J4	500° /s
	J5	470° /s
	J6	500° /s
Max Operation Area	J1	±170°
	J2	-80° ~ 120°
	J3	-180° ~ 50°
	J4	±170°
	J5	±125°
	J6	±360°
Protective Level	IP54	
Position Repeat Accuracy※	±0.01mm	
Controller	VC-TRC4-A03	
Working Temperature	0~45°C	



# VC-TRB050

Payload: 3kg  
Length: 616mm

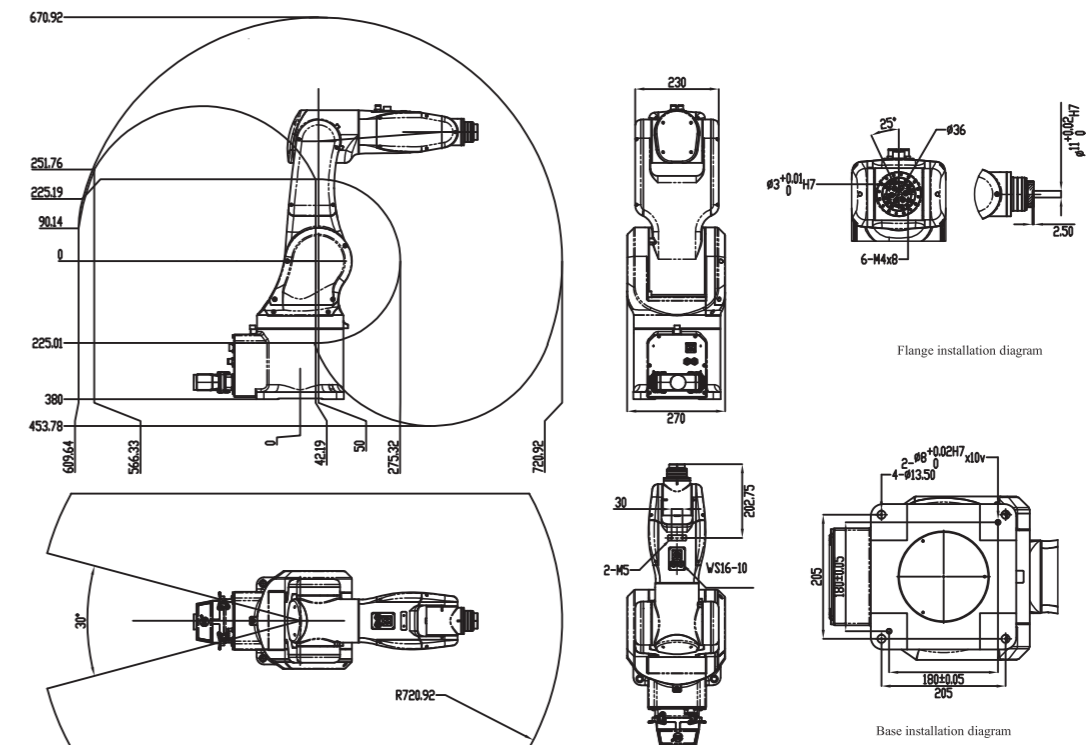
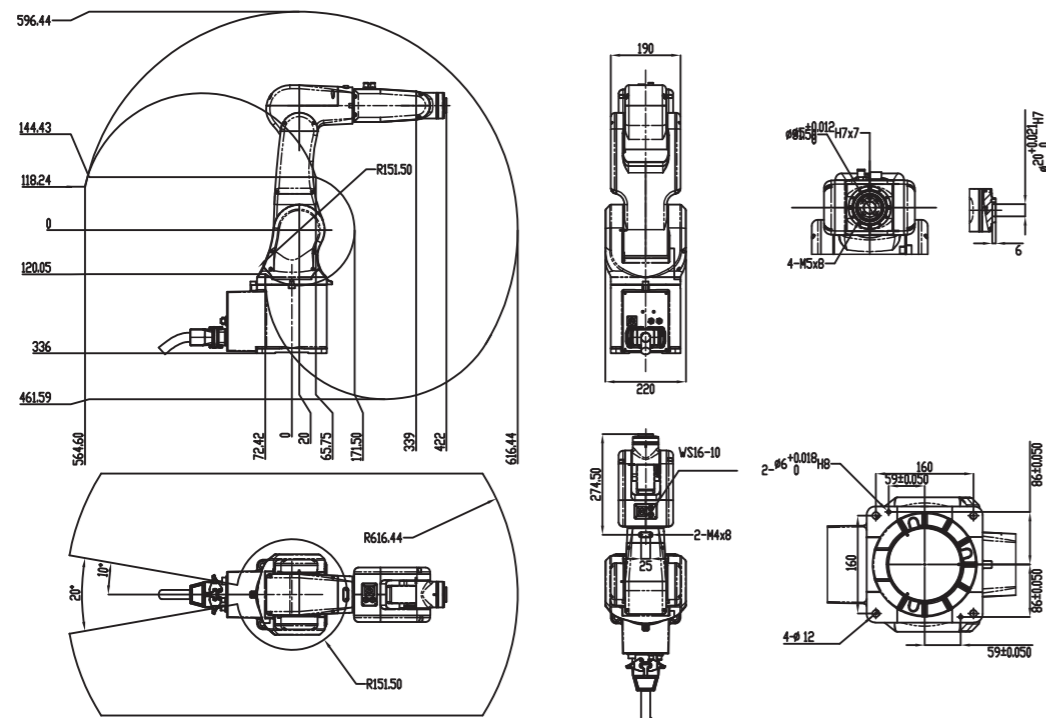
Model	VC-TRB050
Payload	3kg
Max Working Radius	616mm
DOF	6-axis
Body Weight	35kg
Rated Power	1.05kw
Max Speed	J1 450° /s
	J2 450° /s
	J3 720° /s
	J4 720° /s
	J5 720° /s
	J6 720° /s
Max Operation Area	J1 ±170°
	J2 -80° ~ 120°
	J3 -75° ~ 75°
	J4 ±120°
	J5 ±120°
	J6 ±360°
Protective Level	IP54
Position Repeat Accuracy※	±0.02mm
Controller	VC-TRC4-A03
Working Temperature	0~45°C



# VC-TKB060

Payload: 6kg  
Length: 720mm

Model	VC-TKB060
Payload	6kg
Max Working Radius	720mm
DOF	6-axis
Body Weight	40kg
Rated Power	2.2kw
Max Speed	J1 450° /s
	J2 450° /s
	J3 450° /s
	J4 458° /s
	J5 540° /s
	J6 360° /s
Max Operation Area	J1 ±165°
	J2 -75° ~ 110°
	J3 -100° ~ 55°
	J4 ±160°
	J5 ±110°
	J6 ±360°
Protective Level	IP54/IP67(5/6-axis optional)
Position Repeat Accuracy※	±0.02mm
Controller	VC-TRC4-A03
Working Temperature	0~45°C







# VC-TKB1440

Payload: 10kg  
Length: 1455mm

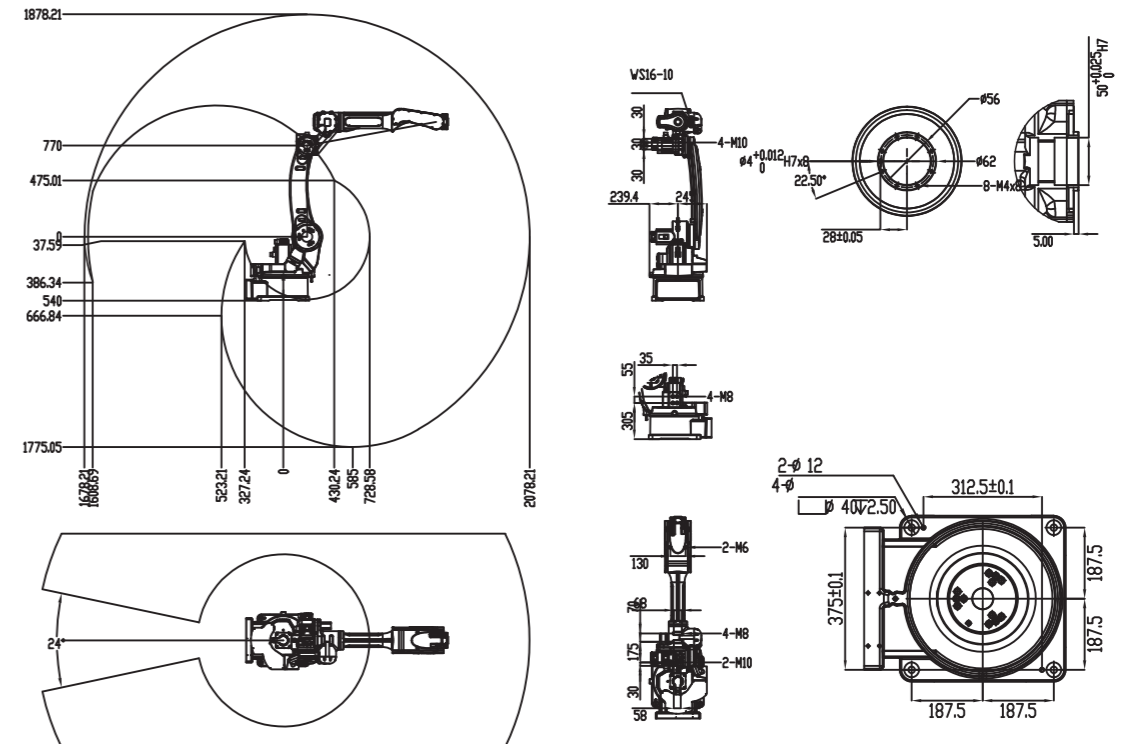
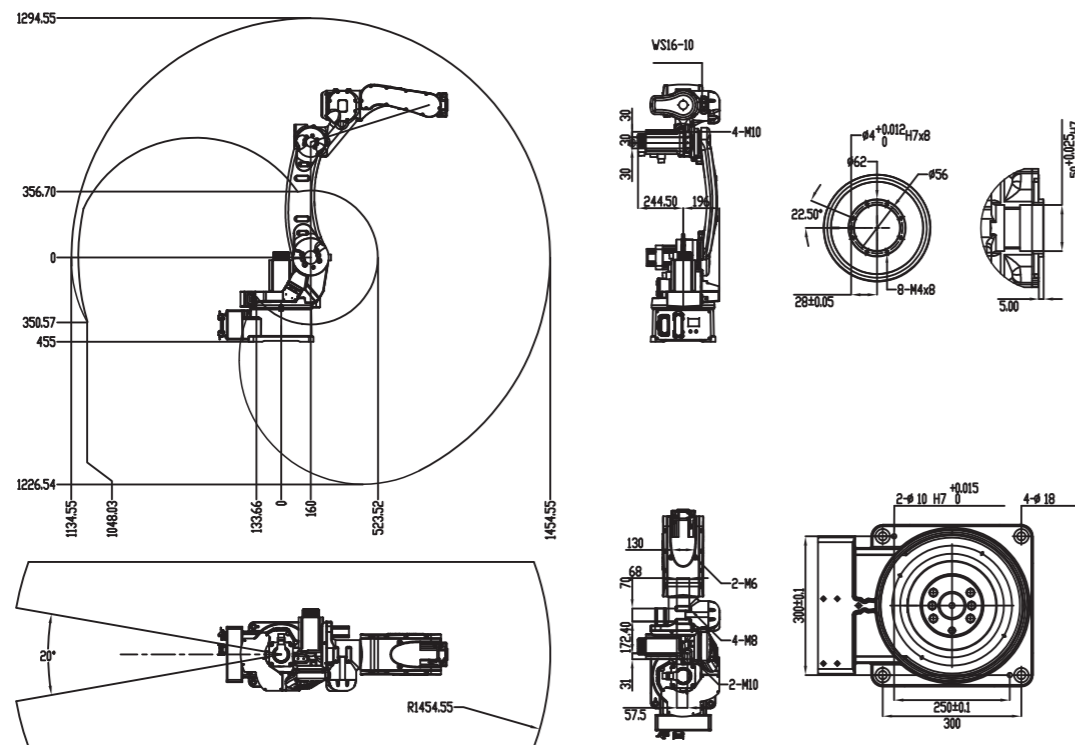
Model	VC-TKB1440	
Payload	10kg	
Max Working Radius	1455mm	
DOF	6-axis	
Body Weight	155kg	
Rated Power	4.3kw	
Max Speed	J1	198° /s
	J2	198° /s
	J3	210° /s
	J4	330° /s
	J5	450° /s
	J6	700° /s
Max Operation Area	J1	±170°
	J2	-92° ~ 153°
	J3	-100° ~ 75°
	J4	±190°
	J5	±130°
	J6	±360°
Protection Level	IP54	
Position Repeat Accuracy※	±0.05mm	
Controller	VC-TRC5-B06	
Working Temperature	0~45°C	



# VC-TKB2030

Payload: 6kg  
Length: 2078mm

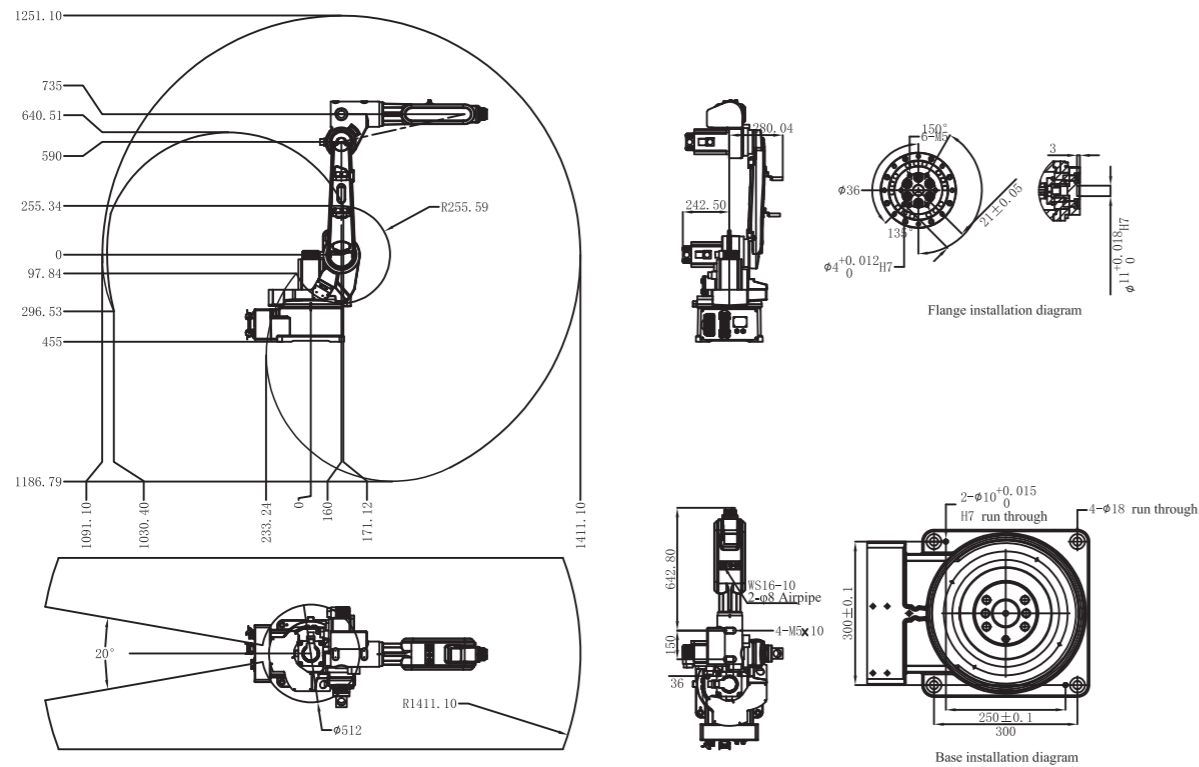
Model	VC-TKB2030	
Payload	6kg	
Max Working Radius	2078mm	
DOF	6-axis	
Body Weight	210kg	
Rated Power	4.3kw	
Max Speed	J1	168° /s
	J2	148° /s
	J3	160° /s
	J4	330° /s
	J5	450° /s
	J6	700° /s
Max Operation Area	J1	±160°
	J2	-90° ~ 150°
	J3	-100° ~ 75°
	J4	±190°
	J5	±130°
	J6	±360°
Protection Level	IP54	
Position Repeat Accuracy※	±0.07mm	
Controller	VC-TRC5-B06	
Working Temperature	0~45°C	



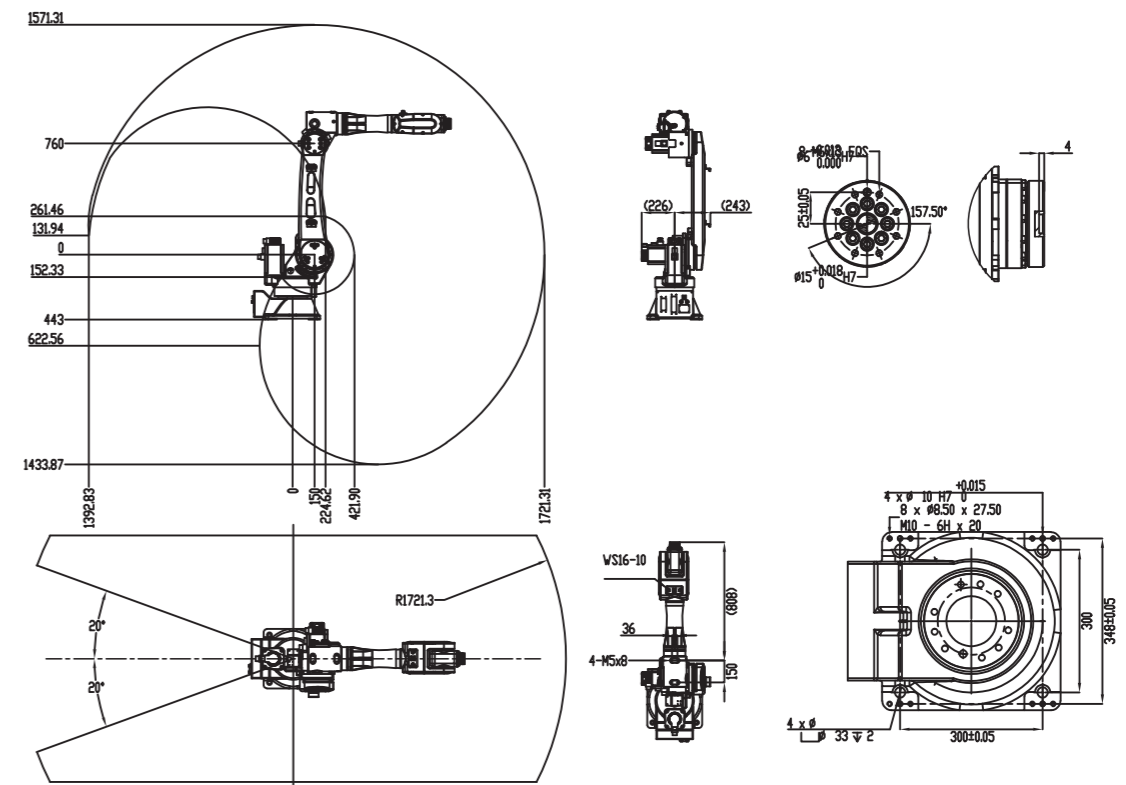
# VC-TKB1600

Payload: 12kg  
Length: 1410mm

Model	VC-TKB1600	
Payload	12kg	
Max Working Radius	1410mm	
DOF	6-axis	
Body Weight	160kg	
Rated Power	4.3kw	
Max Speed	J1	148° /s
	J2	148° /s
	J3	230° /s
	J4	480° /s
	J5	256° /s
	J6	450° /s
Max Operation Area	J1	±170°
	J2	-92° ~ 153°
	J3	-100° ~ 80°
	J4	±140°
	J5	±120°
	J6	±360°
Protection Level	IP54/IP67(5/6-axis optional)	
Position Repeat Accuracy※	±0.06mm	
Controller	VC-TRC5-B06	
Working Temperature	0~45°C	



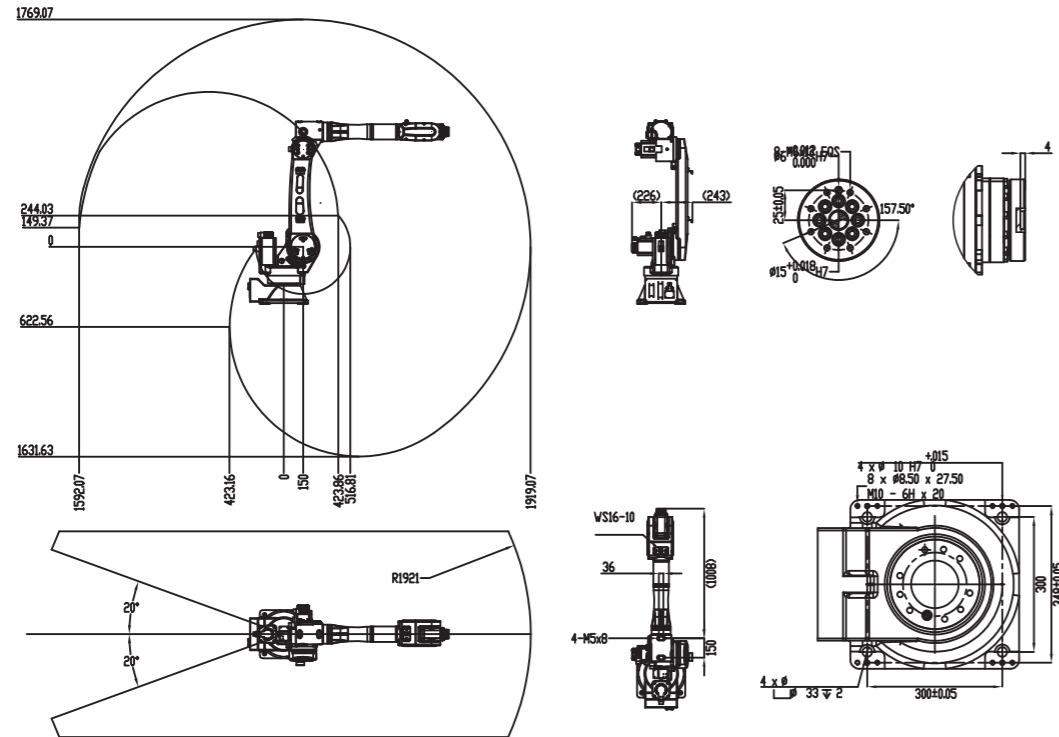
Model	VC-TKB2670	
Payload	20kg	
Max Working Radius	1721mm	
DOF	6-axis	
Body Weight	210kg	
Rated Power	4.5kw	
Max Speed	J1	186° /s
	J2	186° /s
	J3	200° /s
	J4	452° /s
	J5	400° /s
	J6	555° /s
Max Operation Area	J1	±160°
	J2	-80° ~ 150°
	J3	-100° ~ 80°
	J4	±150°
	J5	±110°
	J6	±360°
Protection Level	IP54/IP67(5/6-axis optional)	
Position Repeat Accuracy※	±0.05mm	
Controller	VC-TRC5-B06	
Working Temperature	0~45°C	



# VC-TKB2690

Payload: 20kg  
Length: 1920mm

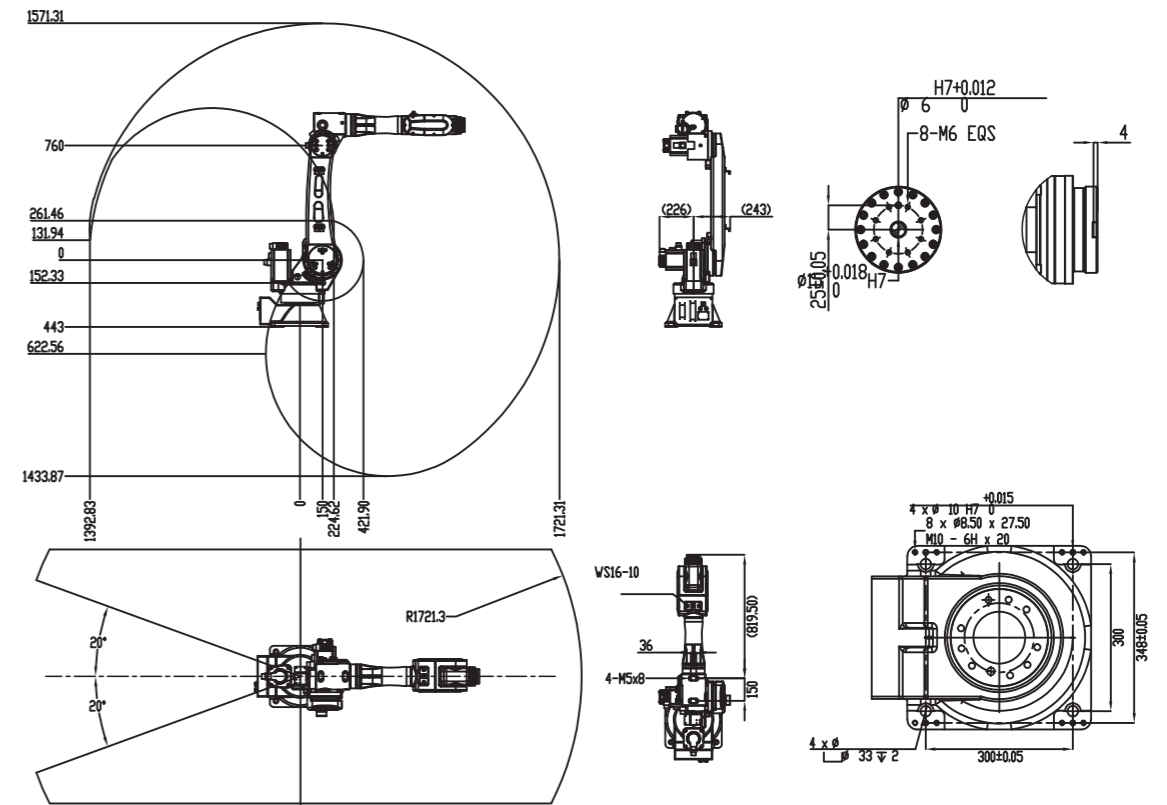
Model	VC-TKB2690	
Payload	20kg	
Max Working Radius	1920mm	
DOF	6-axis	
Body Weight	220kg	
Rated Power	4.7kw	
Max Speed	J1	186° /s
	J2	186° /s
	J3	200° /s
	J4	452° /s
	J5	400° /s
	J6	555° /s
Max Operation Area	J1	±160°
	J2	-80° ~ 150°
	J3	-100° ~ 80°
	J4	±150°
	J5	±110°
	J6	±360°
Protective Level	IP54/IP67(5/6-axis optional)	
Position Repeat Accuracy※	±0.05mm	
Controller	VC-TRC5-B06	
Working Temperature	0~45°C	



Model	VC-TKB3670	
Payload	30kg	
Max Working Radius	1721mm	
DOF	6-axis	
Body Weight	220kg	
Rated Power	5kw	
Max Speed	J1	186° /s
	J2	170° /s
	J3	200° /s
	J4	452° /s
	J5	330° /s
	J6	450° /s
Max Operation Area	J1	±160°
	J2	-80° ~ 150°
	J3	-100° ~ 80°
	J4	±150°
	J5	±110°
	J6	±360°
Protective Level	IP54/IP67(5/6-axis optional)	
Position Repeat Accuracy※	±0.05mm	
Controller	VC-TRC5-B06	
Working Temperature	0~45°C	

# VC-TKB3670

Payload: 30kg  
Length: 1721mm



# VC-TKB3690

Payload: 30kg  
Length: 1920mm

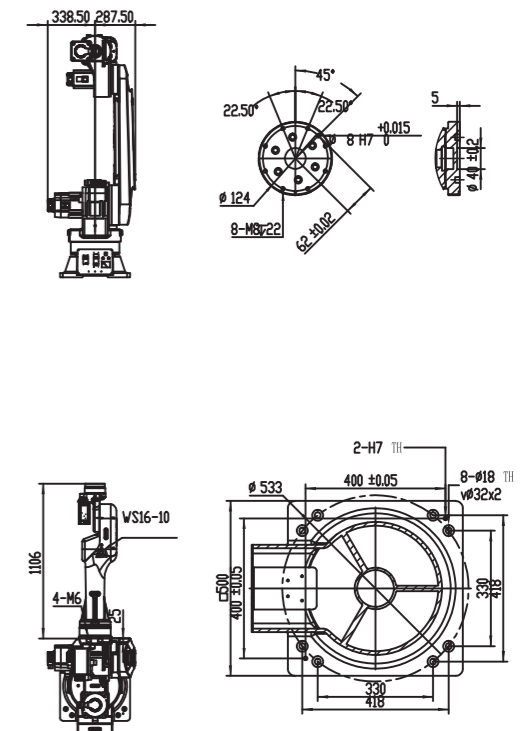
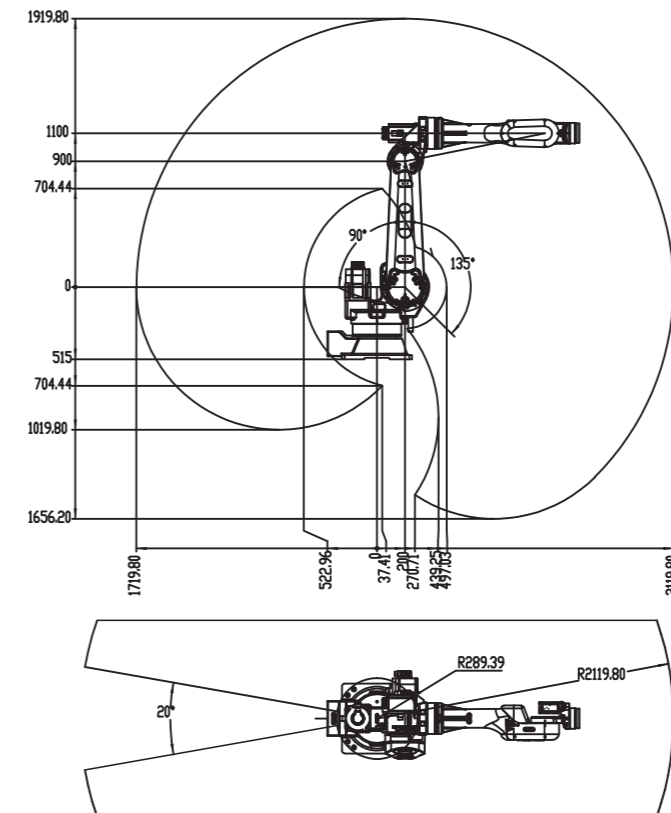
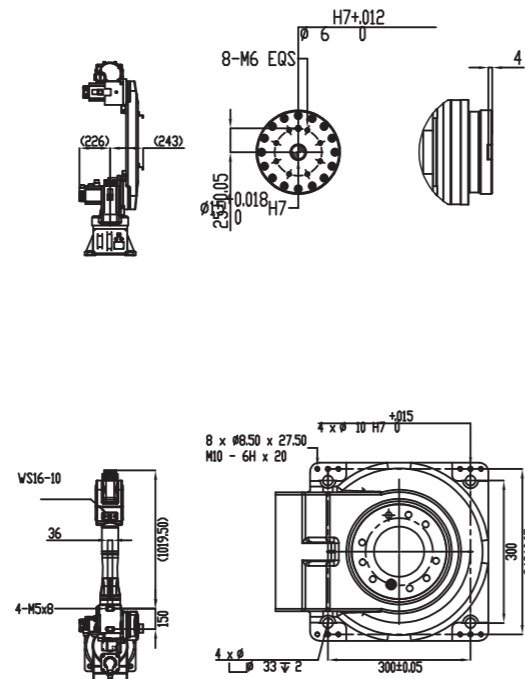
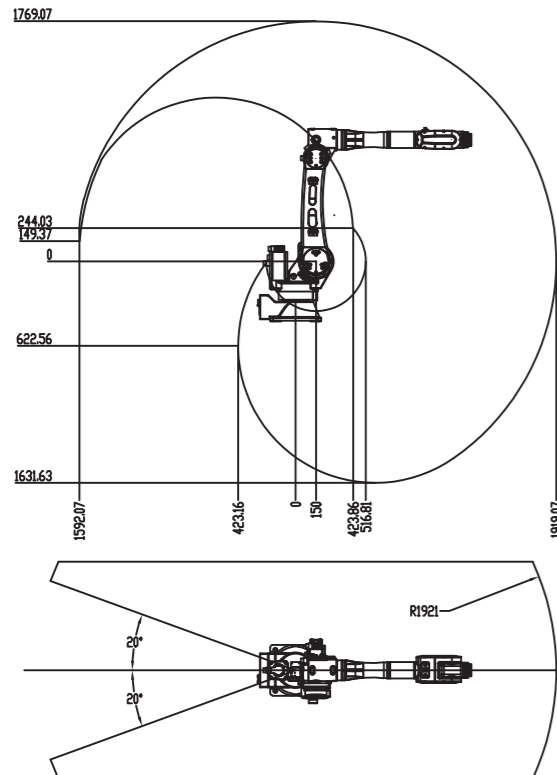
Model	VC-TKB3690	
Payload	30kg	
Max Working Radius	1920mm	
DOF	6-axis	
Body Weight	220kg	
Rated Power	5.2kw	
Max Speed	J1	186° /s
	J2	170° /s
	J3	200° /s
	J4	452° /s
	J5	330° /s
	J6	450° /s
Max Operation Area	J1	±160°
	J2	-80° ~150°
	J3	-100° ~80°
	J4	±150°
	J5	±110°
	J6	±360°
Protective Level	IP54/IP67(5/6-axis optional)	
Position Repeat Accuracy※	±0.05mm	
Controller	VC-TRC5-B06	
Working Temperature	0~45°C	



# VC-TKB5600

Payload: 60kg  
Length: 2119mm

Model	VC-TKB5600	
Payload	60kg	
Max Working Radius	2119mm	
DOF	6-axis	
Body Weight	600kg	
Rated Power	6.5kw	
Max Speed	J1	127°/s
	J2	105°/s
	J3	165°/s
	J4	253°/s
	J5	250°/s
	J6	372°/s
Max Operation Area	J1	±170°
	J2	-90° ~135°
	J3	-185° ~90°
	J4	±200°
	J5	±105°
	J6	±360°
Protective Level	IP54	
Position Repeat Accuracy※	±0.08mm	
Controller	VC-TRC3-C06	
Working Temperature	0~45°C	





# VC-RRB6700

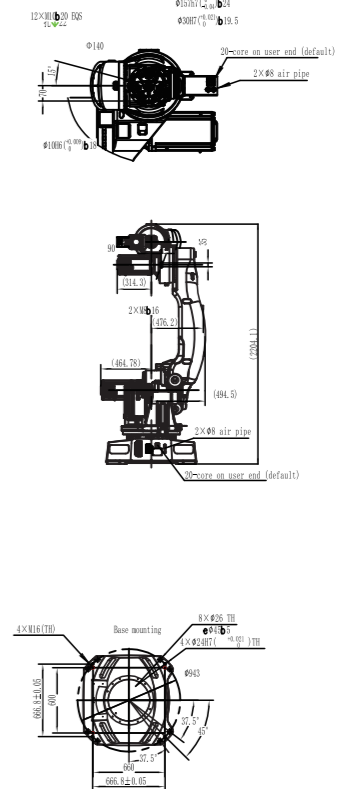
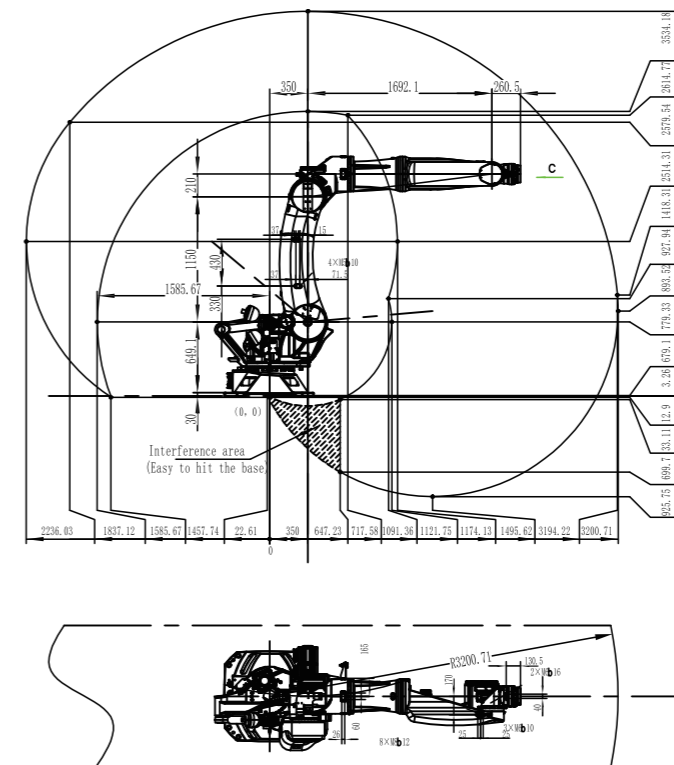
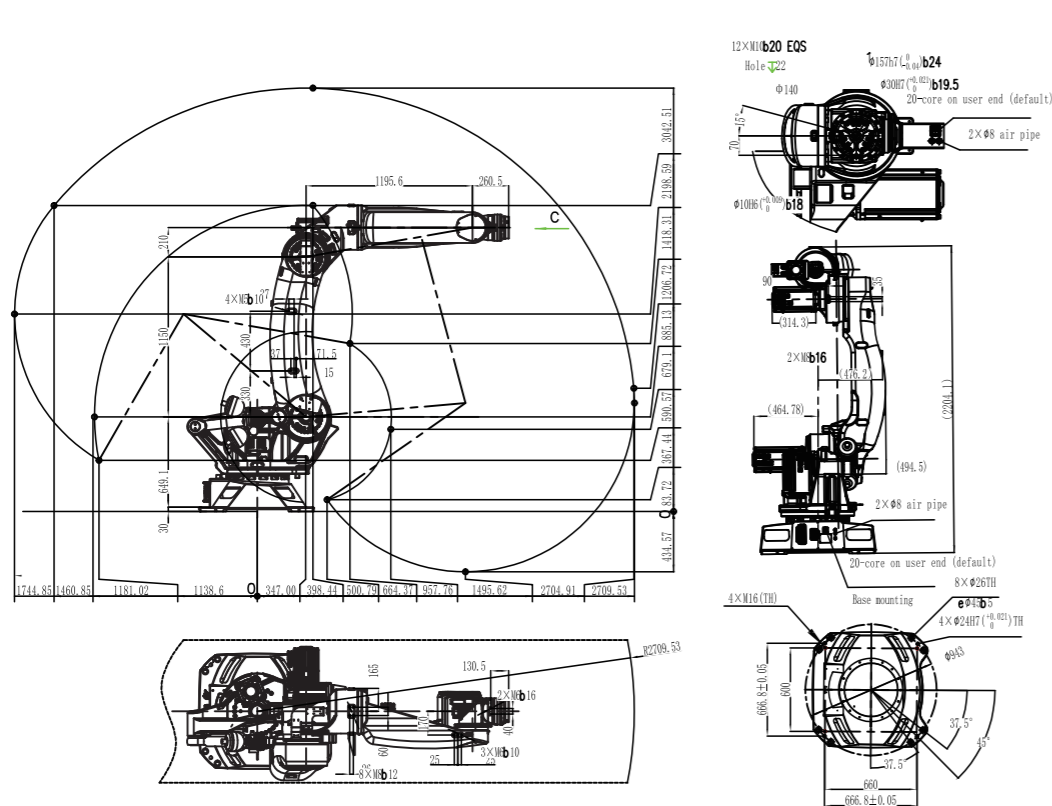
Payload: 210kg  
Length: 2700mm

Model	VC-RRB6700	
Payload	210kg	
Max Working Radius	2700mm	
DOF	6-axis	
Body Weight	1300kg	
Rated Power	8.5kw	
Max Speed	J1	114°/s
	J2	83°/s
	J3	95°/s
	J4	180°/s
	J5	165°/s
	J6	219°/s
Max Operation Area	J1	±185°
	J2	-50°~ 85°
	J3	-180°~ 70°
	J4	±360°
	J5	±125°
	J6	±360°
Protective Level	J5 J6	IP65
	Others	IP54
Position Repeat Accuracy※	±0.1mm	
Controller	VC-TRC3-D06	
Working Temperature	0~45°C	

# VC-RRB6600

Payload: 155kg  
Length: 3200mm

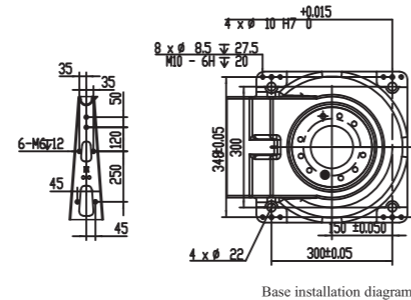
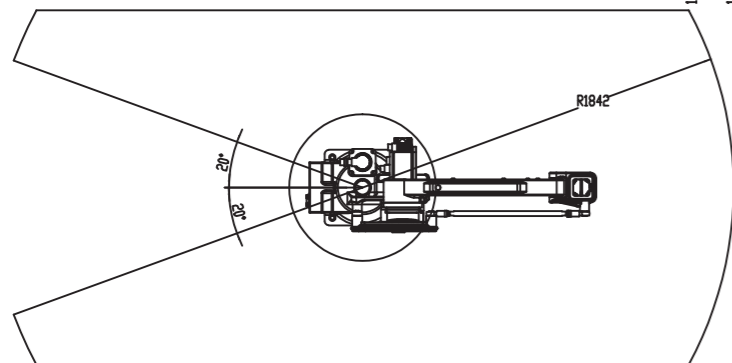
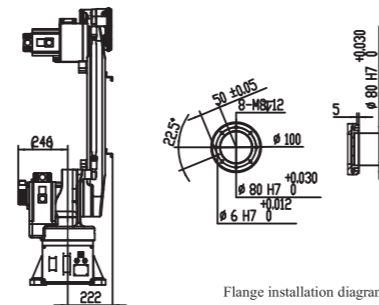
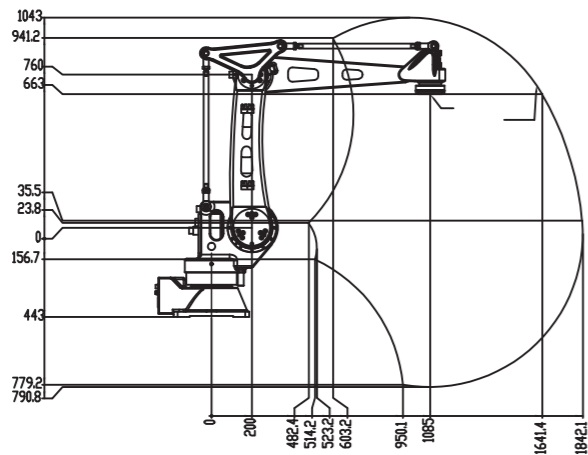
Model	VC-RRB6600	
Payload	155kg	
Max Working Radius	3200mm	
DOF	6-axis	
Body Weight	1320kg	
Rated Power	7.5kw	
Max Speed	J1	110°/s
	J2	83°/s
	J3	95°/s
	J4	150°/s
	J5	150°/s
	J6	200°/s
Max Operation Area	J1	±185°
	J2	-40°~ 85°
	J3	-180°~ 75°
	J4	±360°
	J5	±125°
	J6	±360°
Protective Level	J5 J6	IP65
	Others	IP54
Position Repeat Accuracy※	±0.1mm	
Controller	VC-TRC3-D06	
Working Temperature	0~45°C	



# VC-TKB460

Payload: 30kg  
Length: 1840mm

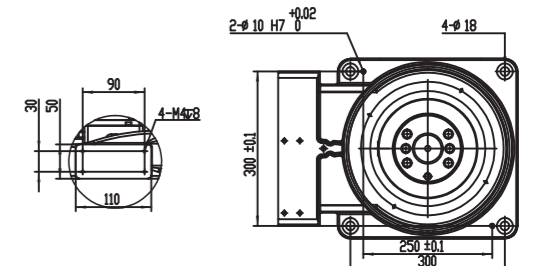
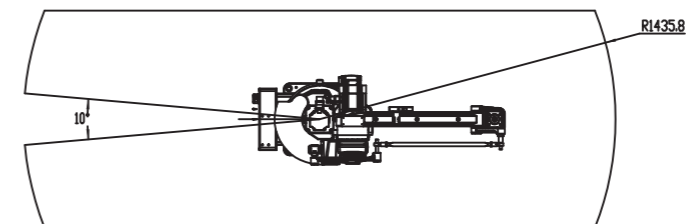
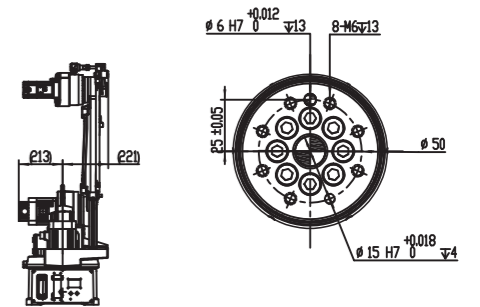
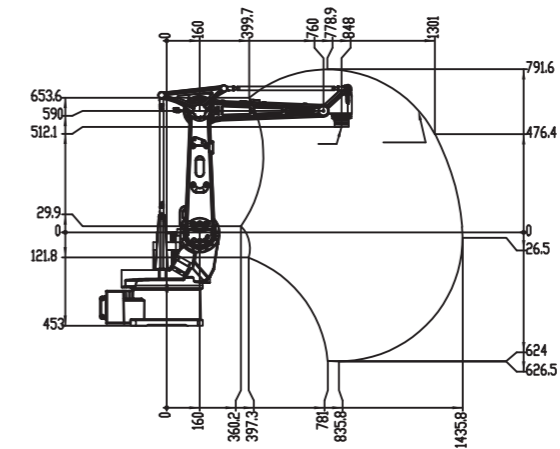
Model	VC-TKB460	
Payload	30kg	
Max Working Radius	1840mm	
DOF	4-axis	
Body Weight	240kg	
Rated Power	4.2kw	
Max Speed	J1	200° /s
	J2	175° /s
	J3	175° /s
	J4	360° /s
Max Operation Area	J1	±175°
	J2	-35° ~ 85°
	J3	-90° ~ 70°
	J4	±360°
Protective Level	IP54	
Position Repeat Accuracy※	±0.08mm	
Controller	VC-TRC5-B06/VC-TRC3-D06	
Working Temperature	0~45°C	



# VC-TKB460

Payload: 12kg  
Length: 1435mm

Model	VC-TKB460	
Payload	12kg	
Max Working Radius	1435mm	
DOF	4-axis	
Body Weight	175kg	
Rated Power	2.5kw	
Max Speed	J1	210° /s
	J2	205° /s
	J3	185° /s
	J4	500° /s
Max Operation Area	J1	±175°
	J2	-35° ~ 85°
	J3	-90° ~ 70°
	J4	±360°
Protective Level	IP54	
Position Repeat Accuracy※	±0.08mm	
Controller	VC-TRC5-B06/VC-TRC3-D06	
Working Temperature	0~45°C	



# VC-TKB660

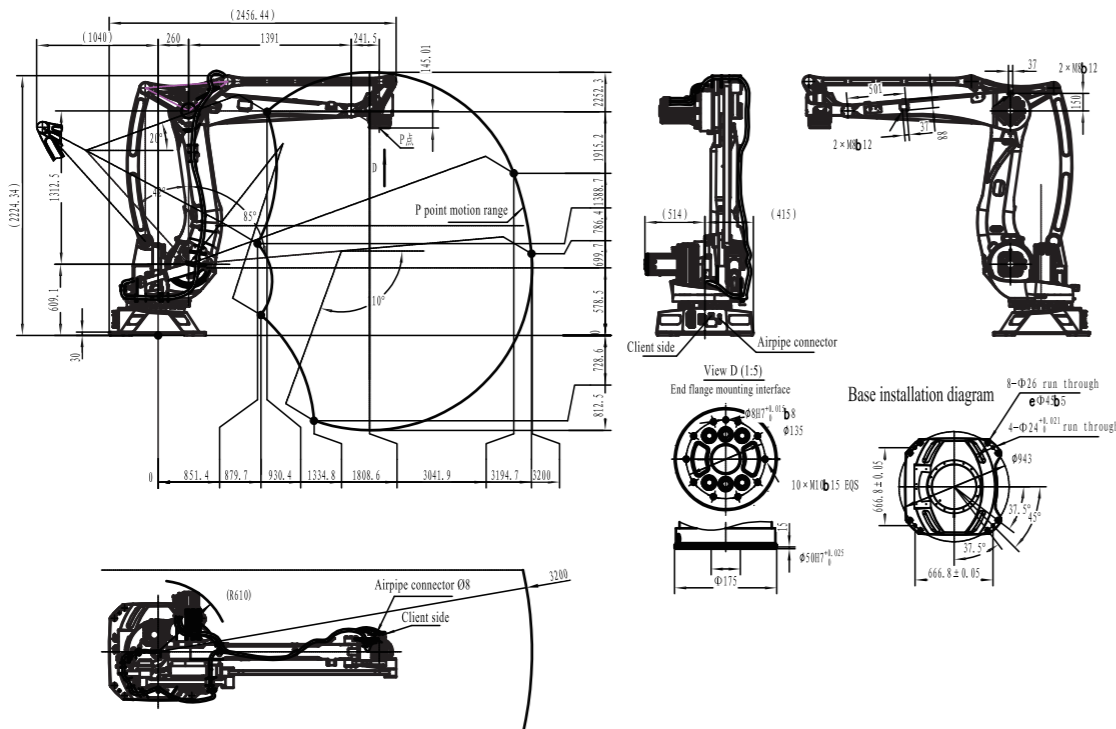
Payload: 180kg  
Length: 3200mm

Model	VC-TKB660	
Payload	180kg	
Max Working Radius	3200mm	
DOF	4-axis	
Body Weight	1193kg	
Rated Power	5.5kw	
Max Speed	J1	105° /s
	J2	83° /s
	J3	129.5° /s
	J4	270° /s
Max Operation Area	J1	±185°
	J2	-42° ~ 85°
	J3	-20° ~ 110°
	J4	±360°
Protective Level	IP54/IP65 (4-axis optional)	
Position Repeat Accuracy*	±0.1mm	
Controller	VC-TRC3-C06	
Working Temperature	0~45°C	



# VC-TRP04 Teach Pendant

Model	VC-TRP04-DS	VC-TRP04-QT
Main Chip	REALTEK	ARM
Memory	/	512MBDDR
Capacity	/	4G Flash
OS	/	LINUX
Touch Screen	Resistance-type	Resistance-type
IDE	/	QT5.15
USB	/	USB2.0HOST
Touch Screen Resolution	8" TFT resolution: 1024*768	
Key	12 log keys, 4 program control keys, and 4 customizable function keys	
Switch	Emergency stop switch, enable switch, and mode switch	
Protection Level	IP54	
Communication	LVDS	Ethernet
Cable Length	5m	10/15/20/30m
Operating Temperature	-30° ~ 80°	
Outer Dimension	290mm*240mm*53mm	



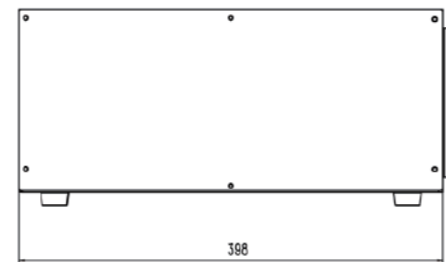
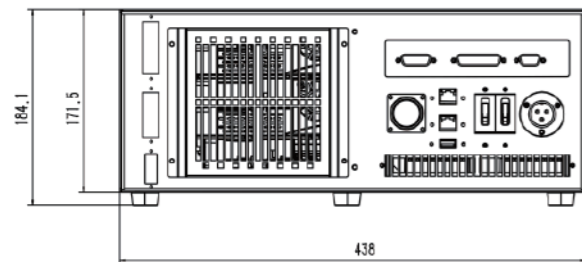
- High-performance processor: a built-in high-performance processor in the controller, which ensures stable operation and high-speed data transmission to achieve complex multi-axis motion control.
- Various communication interfaces: TRP04 pendant support Ethernet, serial port, CAN bus and more for convenient industrial equipment connection and data interaction.
- Remote monitoring and debugging: Remote access to the TRP04 teach pendant through the Internet for real-time monitoring of the robot's operating status, remote debugging and program updating to improve work efficiency.

## VC-TRC4-A03 Controller

Model	VC-TRC4-A03
Installation Method	Vertical
Standard IO	18×NPN input,10×RO
Comm Port	Ethernet For TCP/IP, Modbus TCP, Ethernet/IP, and MC communication
	EtherCAT: For external axis expansion
	Modbus-TCP to RS232 or RS485
	USB2.0: For program backup and loading, and export of robot status information
Control Mode	PC programming platform, pendant, remote IO control, remote Modbus control, and API
Protection Level	IP54
Operating Environment	Temp.: 0°C ~40°C; Humidity: 20%~95%RH(30°C) (no condensation)
Dimension	438mmx398mmx185mm
Weight	12kg
Application	VCG030-500,VCG100-700, VCH030-400/500/600,VCH100-800/900/1000, VCH200-1200,VCW030-500/600, VCW060-500/600/700,VC-TKB1010, VC-TRB050,VC-TKB060,VC-TKB070, VC-TKB1210,VC-TKB1100



### Controller Dimension

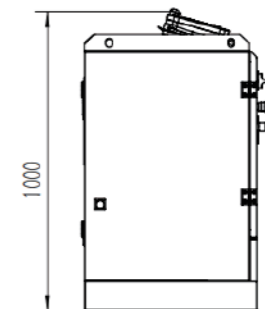
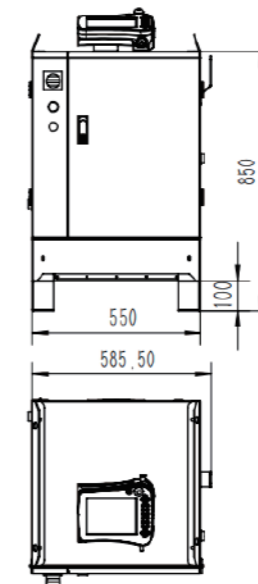
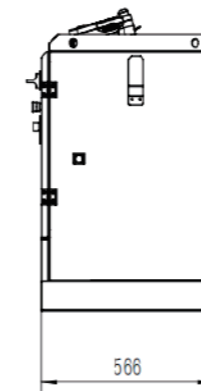


## VC-TRC5-B06 Controller

Model	VC-TRC5-B06
Installation Method	Vertical
Standard IO	Handling: 18×NPN input,10×RO(relay output) Welding: 6×NPN input,10×RO, 2×AO(analog output)
Comm Port	Ethernet For TCP/IP, Modbus TCP, Ethernet/IP, and MC communication
	EtherCAT: For external axis expansion
	Modbus-TCP to RS232 or RS485
	USB2.0: For program backup and loading, and export of robot status information
Control Mode	PC programming platform, pendant, remote IO control, remote Modbus control, and API
Protection Level	IP65
Operating Environment	Temp.: 0°C ~40°C; Humidity: 20%~95%RH(30°C) (no condensation)
Dimension	850mmx550mmx566mm
Weight	76kg
Application	VC-TCR300,VC-TKB1400,VC-TKB1440, VC-TKB1600,VC-TKB2030,VC-TKB2670, VC-TKB2690,VC-TKB3670,VC-TKB3690, VC-TKB4600,VC-TKB460



### Controller Dimension

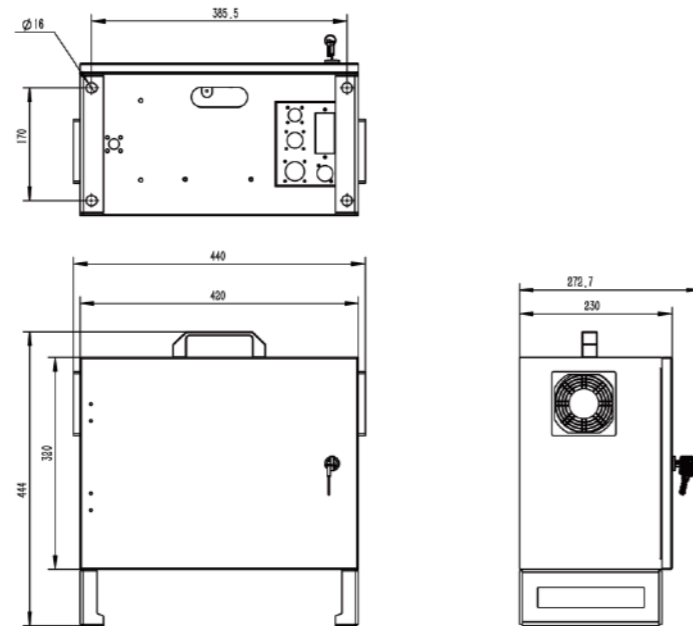


## VC-TRC5-G06 Controller

Model	VC-TRC5-G06
Installation Method	Vertical
Standard IO	10×NPN input,14×NPN output
Comm Port	Ethernet For TCP/IP, Modbus TCP, Ethernet/IP, and MC communication
	EtherCAT: For external axis expansion
	Modbus-TCP to RS232 or RS485
	USB2.0: For program backup and loading, and export of robot status information
Control Mode	PC programming platform, pendant, remote IO control, remote Modbus control, and API
Protection Level	IP54
Operating Environment	Temp.: 0°C ~40°C; Humidity: 20%~95%RH(30°C) (no condensation)
Dimension	420mmx235mmx405mm
Weight	14kg
Application	VC-TCR030,VC-TCR050,VC-TCR100, VC-TCR200



### Controller Dimension

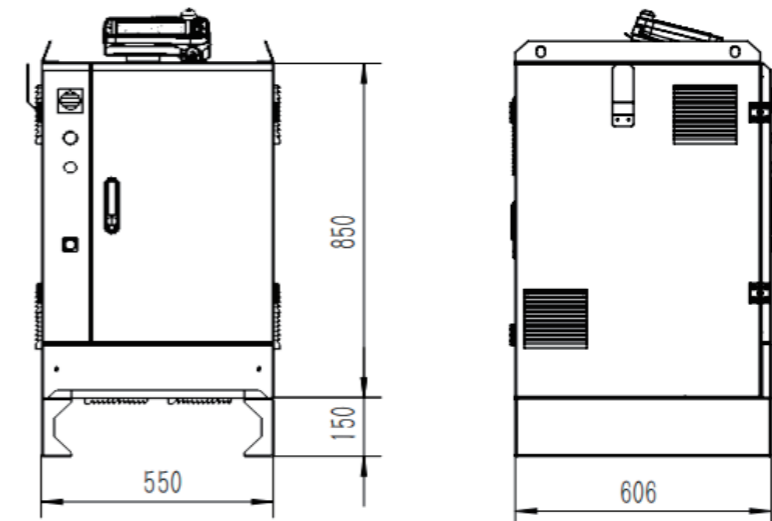


## VC-TRC3-C06 Controller

Model	VC-TRC3-C06
Installation Method	Vertical
Standard IO	10×NPN input,14×RO
Comm Port	Ethernet For TCP/IP, Modbus TCP, Ethernet/IP, and MC communication
	EtherCAT: For external axis expansion
	Modbus-TCP to RS232 or RS485
	USB2.0: For program backup and loading, and export of robot status information
Control Mode	PC programming platform, pendant, remote IO control, remote Modbus control, and API
Protection Level	IP54
Operating Environment	Temp.: 0°C ~40°C; Humidity: 20%~95%RH(30°C) (no condensation)
Dimension	1000mmx550mmx606mm
Weight	100kg
Application	VC-TKB5600,VC-TKB5700,VC-TKB5800, VC-TKB660



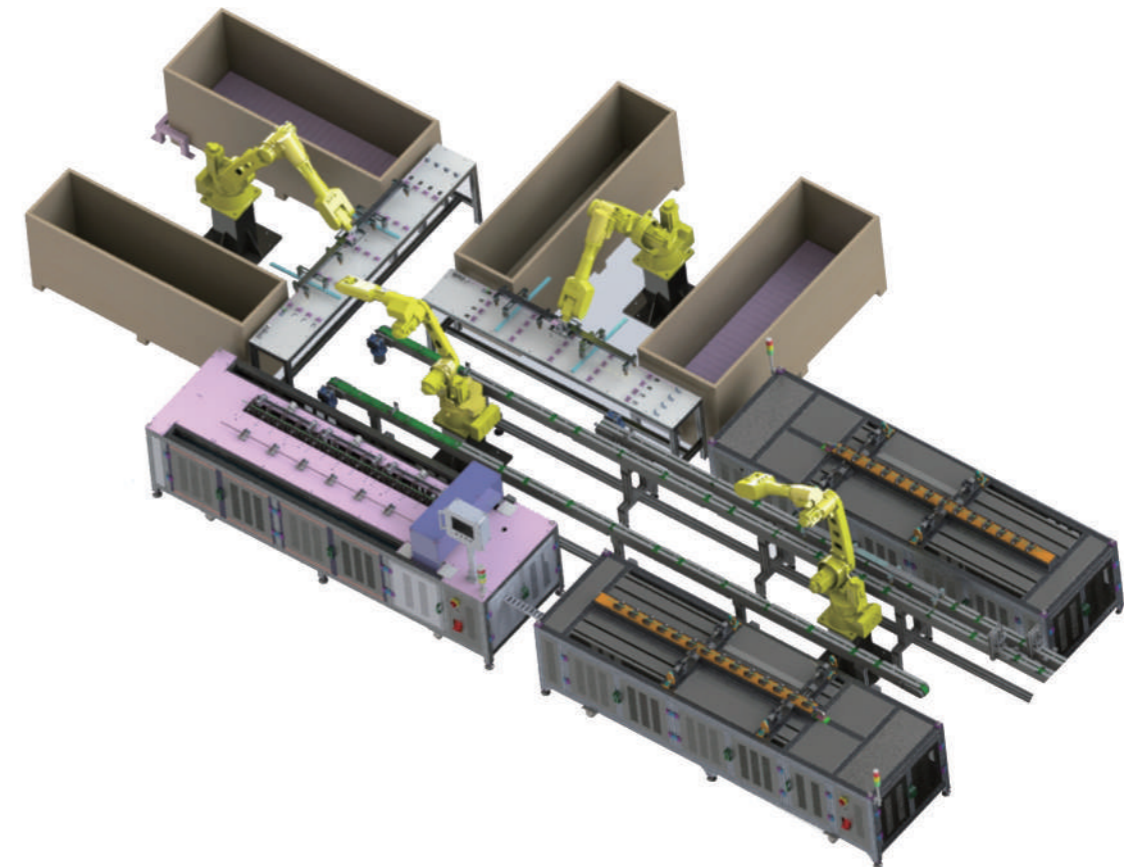
### Controller Dimension



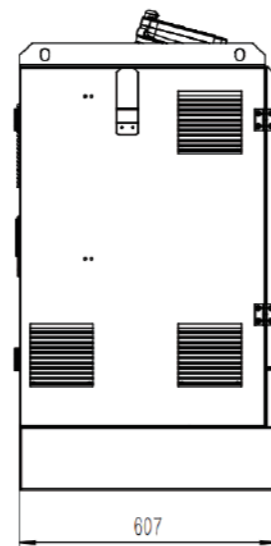
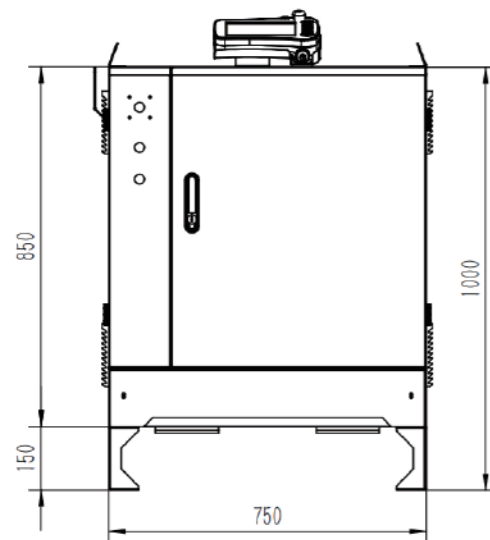
# VC-TRC3-D06 Controller

# Application Scenario

Model	VC-TRC3-D06
Installation Method	Vertical
Standard IO	10×NPN input, 14×RO
Comm Port	Ethernet For TCP/IP, Modbus TCP, Ethernet/IP, and MC communication
	EtherCAT: For external axis expansion
	Modbus-TCP to RS232 or RS485
	USB2.0: For program backup and loading, and export of robot status information
Control Mode	PC programming platform, pendant, remote IO control, remote Modbus control, and API
Protection Level	IP54
Operating Environment	Temp.: 0°C ~40°C; Humidity: 20%~95%RH(30°C) (no condensation)
Dimension	1000mmx750mmx607mm
Weight	140kg
Application	VC-RRB6700, VC-RRB6600, VC-TKB4600, VC-TKB460



## Controller Dimension



VEICHI Robotics provides technical services such as robot body and integrated robot platform, which are now widely used across multiple industrial scenarios with successful cases in welding, painting, grinding, teaching, assembling, sorting, machine tool loading and unloading, palleting and handling and more, accumulating unanimous praise from customers. In addition to the traditional industrial scenarios like automotive parts and components, 3C electronics, metal processing, packaging and logistics, university research, etc., Veichi Robotics is also entering into new fields like medical, semiconductor, new energy, photovoltaic, lithium-ion power, and new retail.



## Welding

The new generation of innovative welding technology integrates laser trackers, 3D vision systems, and offline trajectory generation, enabling robots to adapt intelligently to complex paths and resist external disturbances.

Automatic welding robots can replace 2-3 welders' workload, ensuring quality while cutting costs. This boosts product qualification rates, shortens iteration cycles, and strengthens customer trust and market competitiveness.

## Machine Loading and Unloading

Industrial robot loading and unloading applications are characterized by high-precision positioning, high stability, high flexibility, and continuous operation. Equipped with force-assisted devices like torque sensors and vision positioning systems, they can fulfill complex loading and unloading requirements.



Automotive parts robot one-to-four loading and unloading



Linear machine loading and unloading



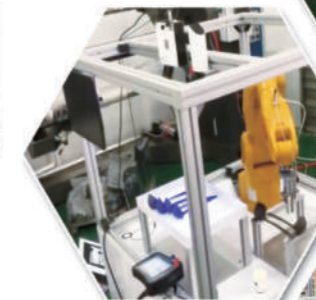
Island one-to-three machine loading and unloading

## Material Handling

Palletizing and handling robots are widely used across various industries. Traditional manual material transfer methods are often inefficient, and robots can take over the repetitive and high-intensity tasks, reducing transfer costs and enhancing transfer efficiency for enterprises.



Energy storage cover smart handling



Smart disordered grasping



Photovoltaic basket handling



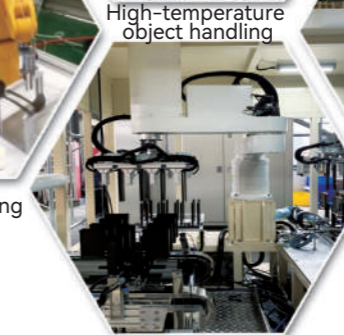
High-temperature object handling



Motor stator silicon steel sheet handling



Unpalitizing handling



Lithium battery handling

## Gluing

Our proprietary offline programming software is capable of automatically creating robot paths and trajectories for intricate continuous surfaces. Coupled with advanced motion control technology, it provides swift responses, perfectly catering to the demands of precision gluing applications.



Washing machine lid gluing



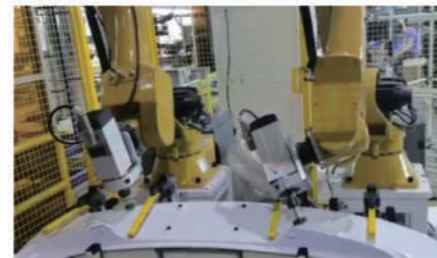
Control cabinet door panel gluing

## Polishing

Polishing applications are characterized by difficult programming, high-frequency vibrations, and constant torque output. We have independently developed offline programming software and developed a force control process package to control the constant pressure during the trajectory operation and customized mechanical structures to solve the difficulties in polishing applications.



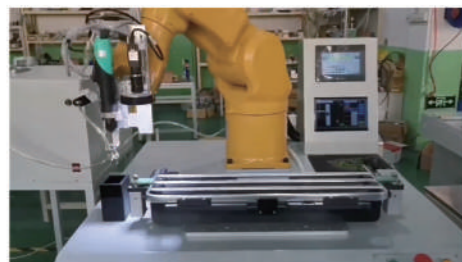
Deburring of castings



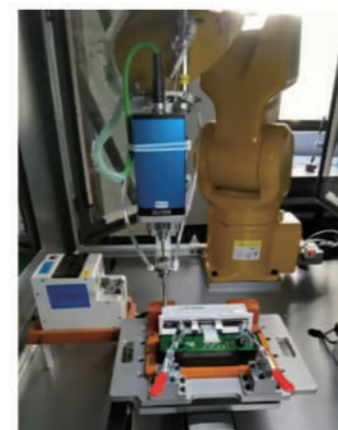
Polishing

## Screw Fastening

Equipped with a screw fastening process package, it features torque feedback, multi-stage torque control, and detection functions for abnormal situations such as missed screws, floating, and slipping teeth, meeting customer needs.



TKB060 Vision-guided screw fastening



C-side of a laptop screw fastening



TKB070 screw fastening



Household appliances screw fastening

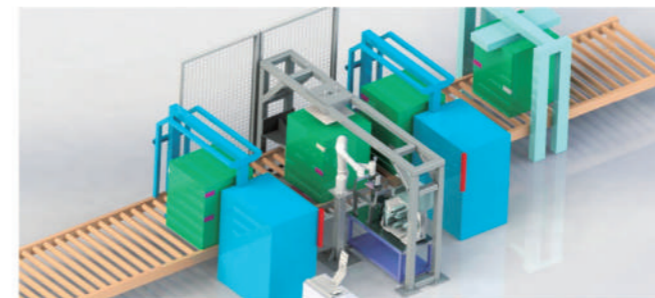
## Collaborative Robots

Collaborative robots represent the next generation of industrial automation, engineered to collaborate seamlessly with human workers. Our company is dedicated to advancing the field of collaborative robotics through focused research, development, and implementation. We are committed to delivering top-tier solutions for welding automation, aiding in the modernization and transformation of the manufacturing sector.

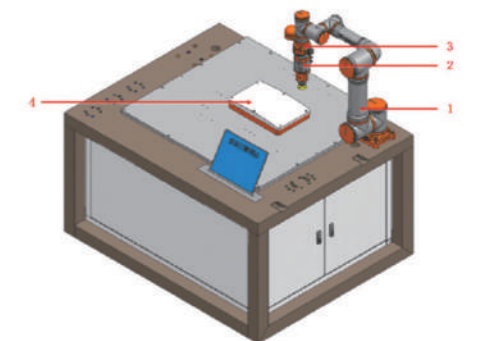
Leveraging our team of expert engineers, we are equipped to offer comprehensive technical solutions tailored to our clients' needs. We are well-prepared to swiftly deliver practical automation solutions that align with the principles of Industry 4.0, ensuring that our customers can benefit from the latest advancements in smart manufacturing.



Automatic coffee latte art



Automatic labeling machine



Surface polishing



Light bulb picking



Household appliance screw fastening



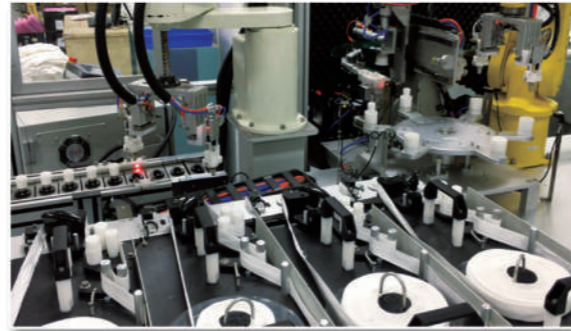
Laser navigation composite robot

# Other Application Scenarios

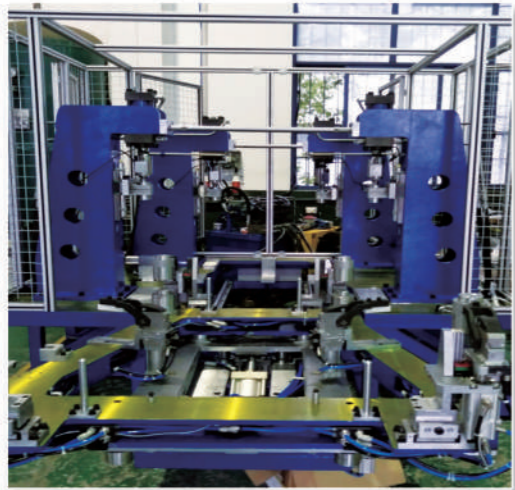
# Partners



Emergency Handling in the 3C Industry  
Intelligent Data Center



LED Assembly in the Lighting Industry



Automobile Front Beam Press  
Equipment Production Line



Laser Cutting



Unmanned Factory of a Top 500 Global  
Environmental Protection Enterprise



Educational Demonstration Workstation

