

QuickPanel+™

Operator Interface for Industrial Internet

Streamline your system and simplify development and maintenance with one powerful device for both your operator interface (OI) and control requirements. The QuickPanel+ is a multi-functional device that delivers actionable data and insight—smarter, faster and easier than ever before.

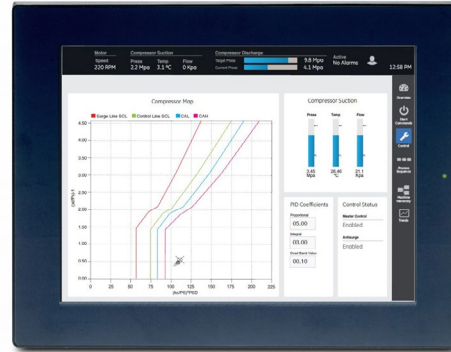
QuickPanel+ integrates process control, view, and an option to run embedded data historian to improve real-time control and simplify integration into plant-wide systems. The QuickPanel+ brings machine interfaces into the Industrial Internet age for new levels of productivity, insight, and user experience.

To succeed in an outcome-driven world, businesses must operate faster and leaner and be increasingly connected. At Emerson, we understand today's connected business environment, and are committed to simplifying it. That's why we've designed an automation architecture that helps you design better machines and plants, operate them smarter, and redefine the interaction with your equipment.

High Performance

With faster processing speeds and more memory, QuickPanel+ delivers high performance control, visualization, and data historian capabilities to maximize productivity and cost efficiency, even in third-party environments.

QuickPanel+ incorporates the latest display and multi-touch technology to enhance the user experience. The capacitive, multi-touch screen is built to last in an industrial environment, yet is as sensitive as the latest smartphone or tablet. The wide screen provides vivid, clear images and more complete process visualization.



Multi-functional Capability

QuickPanel+ provides core capabilities that help users operate in today's connected world. It's an all-in-one OI: an OI/HMI, a PLC/process controller, machine gateway, and a data historian. This combination puts more data at your fingertips, providing instant insight and control while reducing inventory and TCO. Remote programming technology makes it easy to access user accounts through a single access point. A single object-based programming environment means implementation is fast and easy.

Full-Function Browser & Multimedia Access

QuickPanel+ offers a fully-functional HTML5 browser and multimedia support with the Windows EC7 operating system. This results in a new level of versatility for an OI. Users can quickly and easily access the Internet or their intranet to view training videos, compile reports or access other critical information.

Interoperability & Scalability

The plug-and-play interoperability of the QuickPanel+ adds to its ease of use and implementation. Using serial and Ethernet connectivity, it can be used with controllers and I/O from multiple vendors for swift and smooth implementation. Enjoy the functionality of a PC—such as remote desktop, web browser, built-in peer networking and FTP and HTTP servers—without the IT headaches.

QuickPanel+ supports 5 IEC programming languages: Relay Ladder, Sequential Function Chart, Structured Text, Instruction List, and Function Block Diagram. The operator can select multi language support when the system is online. Configuration is easy—a common database reduces development time by eliminating the need to re-enter tag names, and an extensive library of pre-configured animation objects is provided.

Specifications

	6"	7"	10"	12"	15"
Processor Node	Freescale i.MX535 1GHz based on ARM Cortex A8 2D/3D Graphics Processing Unit 32KB Level 1 Instruction/Data Caches 256KB Level 2 Unified Instruction and Data Cache NEON SIMD Media Accelerator Vector Floating Point Coprocessor			Freescale i.MX535 1GHz based on ARM Cortex A8 2D/3D Graphics Processing Unit 32KB Level 1 Instruction/Data Caches 256KB Level 2 Unified Instruction and Data Cache NEON SIMD Media Accelerator Vector Floating Point Coprocessor	
Memory	512MB DDR2 SDRAM 256MB SLC NAND Flash 512KB Battery Backed SRAM		1GB DDR3 SDRAM 512MB SLC NAND Flash 512KB Battery Backed SRAM		
Display	6" TFT LCD 320 x 240 Resolution Resistive Touch Display	7" Widescreen TFT LCD 800 x 480 Resolution Projected Capacitive Display Multi-touch (two-point)	10" TFT LCD 800 x 600 Resolution Projected Capacitive Display Multi-touch (two-point)	12" TFT LCD 800 x 600 SVGA Resolution Projected Capacitive Display Multi-touch (two-point)	15" TFT LCD 1024 x 768 SVGA Resolution Projected Capacitive Display Multi-touch (two-point)
Ethernet Port	1x 10/100BaseT (RJ-45)		2x 10/100BaseT (RJ-45)	1x 10/100BaseT (RJ-45) on IC755CxS12CDA 2x 10/100BaseT (RJ-45) on IC755CxS12CDB	2x 10/100BaseT (RJ-45)
Serial I/O	1x RS-232 COM Port (5-Pin Connector)		1x RS-232 (5-Pin Connector), 1x RS-485 COM Ports (5-Pin Connector)		
USB	2x USB 2.0 (Type-A) 1x USB 2.0 (Mini Type-B)				
Storage	1x SD/SDHC Card Slot				
Audio	x1 Mic In (mono) (3.5mm Jack) x1 Line Out (stereo) (3.5mm Jack)		x1 Mic In (mono) (3.5mm Jack)		
Status Indicators	Tri-color LED (Amber/Green/Red) On-board Buzzer				
Operating System	Microsoft® Windows® Embedded Compact 7				
Power Requirements	+24VDC ±20% (3-Pin Connector) Max power Consumption: 15W		+12/24VDC ±20% (3-Pin Connector) Max power Consumption: 30W		
Physical Specification	External Dimensions: 192(W) x 137(H) x 36(D) mm Weight: 800g		External Dimensions: 278(W) x 222(H) x 65(D) mm Weight: 2.4 Kg	External Dimensions: 314(W) x 248(H) x 65(D) mm Weight: 3Kg	External Dimensions: 399(W) x 323(H) x 70(D) mm Weight: 4.5Kg
Mounting Option	Panel Cutout Dimensions: 183.5(W) x 128.5(H) mm Panel Mount Brackets Included Mounting Gasket VESA 75		Panel Cutout Dimensions: 266(W) x 210(H) Panel Mount Brackets Included Mounting Gasket VESA 100	Panel Cutout Dimensions: 302(W) x 228(H) mm Panel Mount Brackets Included Mounting Gasket VESA 100	Panel Cutout Dimensions: 379(W) x 305(H) mm Panel Mount Brackets Included Mounting Gasket VESA 100
Environmental	Cooling Methodology: Natural Convection Operating Temp: 0°C to +55°C Storage Temp: -10°C to +60°C Humidity: 85% RH (non-condensing) @ 30°C				
Compliance	UL Listed US/CAN Hazardous locations: Class 1 Division 2; Class 2 Division 2; Class 3 Division 1 & 2 UL TYPE 4X CE (EN 60950-1, EN 61000-6-4, 61000-6-2) FCC Part15 Class A IP65F (JEM 1030) RoHS ATEX* Marine*: ABS, BV, DNV GL	UL Listed US/CAN Hazardous locations: Class 1 Division 2 UL TYPE 4X CE (EN 60950-1, EN 61000-6-4, 61000-6-2) FCC Part15 Class A IP65F (JEM 1030) RoHS ATEX* Marine*: ABS, BV, DNV GL	UL Listed US/CAN Hazardous locations: Class 1 Division 2 UL TYPE 4X CE (EN 60950-1, EN 61000-6-4, 61000-6-2) FCC Part15 Class A IP65F (JEM 1030) ATEX* Marine*: ABS, BV, DNV GL	UL Listed US/CAN Hazardous locations: Class 1 Division 2 UL TYPE 4X CE (EN 60950-1, EN 61000-6-4, 61000-6-2) FCC Part15 Class A IP65F (JEM 1030) RoHS ATEX* Marine*: ABS, BV, DNV GL	UL Listed US/CAN Hazardous locations: Class 1 Division 2 UL TYPE 4X CE (EN 60950-1, EN 61000-6-4, 61000-6-2) FCC Part15 Class A IP65F (JEM 1030) RoHS ATEX* Marine*: ABS, BV, DNV GL

*on conformal coat units

Ordering Information

Part Number	Description
6" Units	
IC755CKS06RDM	QuickPanel+ 6" screen with RSTi Modbus TCP
IC755CKS06RDMEP	QuickPanel+ 6" screen with RSTi-EP Modbus TCP
IC755CSS06RDA	QuickPanel+ 6" screen with View and Control
IC755CBS06RDA	QuickPanel+ 6" screen with View and Control (blank bezel)
IC755CSS06RDACA	QuickPanel+ 6" screen with View and Control (conformal coated)
7" Units	
IC755CKW07CDMEP	QuickPanel+ 7" screen with RSTi-EP Modbus TCP
IC755CKW07CDM	QuickPanel+ 7" screen with RSTi Modbus TCP
IC755CBW07CDA	QuickPanel+ 7" screen with View and Control (blank bezel)
IC755CSW07CDA	QuickPanel+ 7" screen with View and Control
IC755CSW07CDACA	QuickPanel+ 7" screen with View and Control (conformal coated)
10" Units	
IC755CKW10CDM	QuickPanel+ 10" screen with RSTi Modbus TCP
IC755CKS10CDMEP	QuickPanel+ 10" screen with RSTi-EP Modbus TCP
IC755CSS10CDA	QuickPanel+ 10" screen with View and Control
IC755CBS10CDA	QuickPanel+ 10" screen with View and Control (blank bezel)
IC755CSS10CDACA	QuickPanel+ 10" screen with View and Control (conformal coated)
12" Units	
IC755CKS12CDMEP	QuickPanel+ 12" screen with RSTi-EP Modbus TCP
IC755CKW12CDM	QuickPanel+ 12" screen with RSTi Modbus TCP
IC755CSS12CDB	QuickPanel+ 12" screen with View and Control
IC755CBS12CDB	QuickPanel+ 12" screen with View and Control (blank bezel)
IC755CSS12CDBCA	QuickPanel+ 12" screen with View and Control (conformal coated)
15" Units	
IC755CKS15CDMEP	QuickPanel+ 15" screen with RSTi-EP Modbus TCP
IC755CKW15CDM	QuickPanel+ 15" screen with RSTi Modbus TCP
IC755CSS15CDA	QuickPanel+ 15" screen with View and Control
IC755CBS15CDA	QuickPanel+ 15" screen with View and Control (blank bezel)
IC755CSS15CDACA	QuickPanel+ 15" screen with View and Control (conformal coated)

Accessories

Part Number	Description
IC755ACC07ADP	QuickPanel+ Panel Adapter Kit (8" QuickPanel to 7" QuickPanel+)
IC755ACC07GAS	QuickPanel+ 7" Replacement Gasket
IC755ACC07MNT	QuickPanel+ 7" Accessory Kit (Replacement Mounting clips, Power and Serial Port Connectors)
IC755ACC07PRO	QuickPanel+ 7" Screen Protectors, Package of 3
IC755ACC10GAS	QuickPanel+ 10" Replacement Gasket
IC755ACC10MNT	QuickPanel+ 10" Accessory Kit (Replacement Mounting clips, Power and Serial Port Connectors)
IC755ACC10PRO	QuickPanel+ 10" Screen Protectors, Package of 3
IC755ACC12GAS	QuickPanel+ 12" Replacement Gasket
IC755ACC12MND	QuickPanel+ 12" Accessory Kit
IC755ACC12PRO	QuickPanel+ 12" Screen Protectors, Package of 3
IC755ACC15GAS	QuickPanel+ 15" Replacement Gasket
IC755ACC15MNT	QuickPanel+ 15" Accessory Kit (Replacement Mounting clips, Power and Serial Port Connectors)
IC755ACC15PRO	QuickPanel+ 15" Screen Protectors (3)
IC755ACCBATT	QuickPanel+ Replacement Battery Pack
IC755ACCBATTNL	QuickPanel+ Replacement Battery Pack, No Leads, for use with 12"

United State Office
Emerson Automation Solutions
Intelligent Platforms, LLC
2500 Austin Dr
Charlottesville, VA

Singapore Office
Emerson Automation Solutions Intelligent
Platforms Asia Pacific Pte. Ltd.
1 Pandan Cres,
Singapore, 128461

Brazil Office
Emerson Automation Solutions
Av. Hollingsworth, 325 – Iporanga
Sorocaba – SP, 18087-105

China Office
Emerson Automation Solutions Intelligent
Platforms (Shanghai) Co., Ltd
No.1277, Xin Jin Qiao Rd, Pudong,
Shanghai, China, 201206

Germany Office
Emerson Automation Solutions
ICC Intelligent Platforms GmbH
Memminger Straße 14
Augsburg, DE 86159

India Offices
Emerson Automation Solutions
Intelligent Platforms Pvt. Ltd.,
Building No.8, Ground Floor
Velankani Tech Park, No.43
Electronics City Phase I, Hosur Rd
Bangalore-560100

Americas Support – Technical and Commercial

Phone: 1-888-565-4155 or 1-434-214-8532 (if toll free 800 option is unavailable)
Email for Technical Support: support.mas@emerson.com
Email for Commercial Support: customercare.mas@emerson.com
Primary language of support: English

Europe, Middle East, & Africa Support – Technical and Commercial

Phone: +800-4-444-8001
or +420-225-379-328 (if toll free 800 option is unavailable or dialing from a mobile telephone)
Email for Technical Support: support.mas.emea@emerson.com
Email for Commercial Support: customercare.emea.mas@emerson.com
Primary languages of support: English, German, Italian, Spanish

Asia Support – Technical and Commercial

Phone: +86-400-842-8599 for Greater China
+65-6955-9413 (All Other Countries)
Email for Technical Support: support.mas.apac@emerson.com
Email for Commercial Support Asia: customercare.cn.mas@emerson.com
Primary languages of support: Chinese, English

Support Website: www.emerson.com/iac-support

Home Website: www.emerson.com/industrial-automation-controls

©2020 Emerson. All rights reserved.

The Emerson logo is a trademark and service mark of Emerson Electric Co. All other marks are property of their respective owners. The contents of this publication are presented for information purposes only, and while effort has been made to ensure their accuracy, they are not to be construed as warranties or guarantees, express or implied, regarding the products or services describe herein or their use or applicability. All sales are governed by our terms and conditions, which are available on request, We reserve the right to modify or improve the designs or specifications of our products an any time without notice.

